

ANN / GLENLEES

Polled Herefords



Guests

PRODUCTION SALE

**BROOKS FARMS · BLAIRS.AG CATTLE CO. · GOLDEN OAK LIVESTOCK
OCTOBER 15, 2022 · 1:00 PM · STEELMAN, SK · CANADA**

Welcome From **ANL** Polled Herefords

Welcome

Wow, what a difference a year makes!

This spring we were blessed with lots of moisture, quite a change from last year. Although seeding was later we did have grass in pastures and hay for feed.

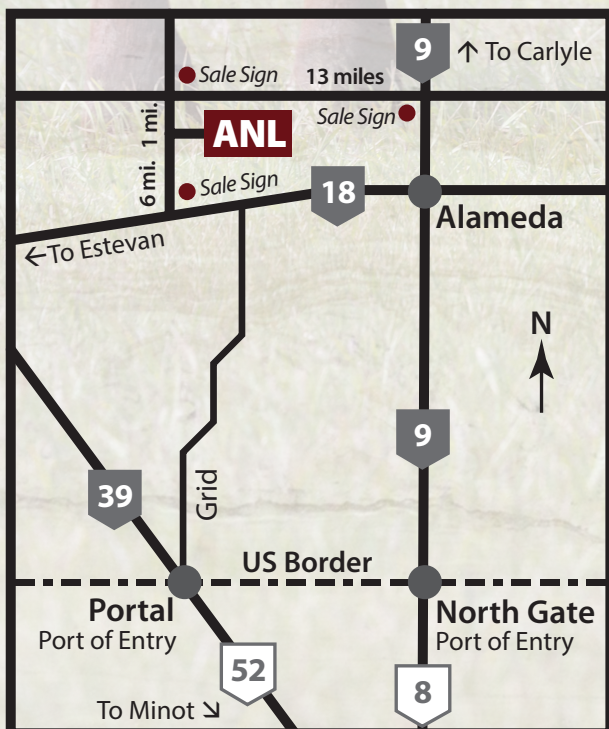
This years offering has no pairs and only five heifer calves. The power is in the breds but that does not mean the calves are lacking – sound, solid and ready for show ring or pasture.

We again welcome our partners Corey, Natasha and girls, George and Annette with their excellent group as well as the Brooks families. They have brought and offering that they can be proud of. Cattle to work in any herd!

Please feel free to stop by any of our farms to view the offering ahead of sale time.

We welcome you to join us October 15th.

Karl & Karen Lischka



TO OUR FOREIGN CUSTOMERS:

Arrangements pertaining to purchases must be made
prior to the sale with each individual consignor.

**JOIN US THE EVENING PRIOR
FOR VIEWING OF THE CATTLE AND
REFRESHMENTS.**

From the Desk At T Bar...

Welcome to the 2022 edition of ANL/Glenlees and Guests Female Production Sale on Saturday, October 15th at the ANL Polled Herefords headquarters, Steelman, Saskatchewan. Each October, this event hosted by Karl and Karen with the folks at Glenlees and guests Brooks Farms, Blairs.Ag and Golden Oak Livestock come together to offer a powerful offering of replacement breeding females... it has become a tradition. Now I could tell you of the many features – progeny from ANL's pasture queen "Jada", the first calves by the 50th Anniversary champion "Game On", the Reserve Champion Female of the 2022 Bonanza, the Reserve Champion Female at the Southeast Field Day or the futuristic embryo package... but I won't!

What I would like to stress is that those features blend into one of the most outstanding group of breeding females to sell this fall. The limited group of heifer calves all exhibit a competitive edge, and we all know what these progressive breeders achieved at the 50th Anniversary of Agribition. The bred heifers are like "raindrops" broody, angular, highly fertile with early services and are true front pasture material. One can bid and acquire with confidence, females which will add value to all breeding operations, big and small... low risk with high reward!

Saturday, October 15th, will be "opportunity day" in the Polled Hereford breed as we sell this offering of herd builders. Plan to visit any of these operations prior the sale where you can view them in their natural environment. Do not hesitate to give any of these great folks a call, discuss their heifers and those that will fit your herd requirements... you can be assured an honest evaluation.

Plan to be with us on Saturday of the Saskatchewan Sweep "Steaks" at ANL. We are excited about the offering... feel free to give any of the T Bar Team a call and we will assist you with your purchases in a professional and confidential manner.



Chris Poley
306-220-5006



Shane Michelson
403-363-9973



Ben Wright
519-374-3335

Chris Poley

Box 2330
Warman, SK S0K 4S0

Ph: 306-933-4200
Fax: 306-934-0744

info@tbarc.com
www.buyagro.com

Watch and bid live at:

Internet Bidding Available
DLMS
www.dlms.ca
For more information call DLMS:
Mark Shologan 780.699.5082 or
DLMS Purebred Team 780.991.3025

**To ensure a catalogue
please remember to bring
this one to the sale...
Thanks!**

**View the catalogue online at
www.buyagro.com**



ANL/GLENLEES & GUESTS PRODUCTION SALE

Saturday, October 15, 2022 - 1:00 PM

At ANL Polled Herefords

Steelman, Saskatchewan (19 Miles North of North Portal)

Your Hosts

ANL Polled Herefords

Karl & Karen Lischka
 Cory, Brenden & Cayden Lischka
 Box 14, Steelman, SK, S0C 2J0
 Phone: 306-487-2670 Cell: 306-487-7794
 Fax: 306-487-2793
 Email: lischka@sasktel.net
 Visit www.anlpolledherefords.com

Glenlees Farm

George & Annette Lees
 Box 358, Arcola, SK, S0C 0G0
 Phone: 306-455-2612
 Fax: 306-455-2177
 Corey, Tasha, Emma, Kyla & Becca Lees
 Box 1, Arcola, SK, S0C 0G0
 Phone: 306-455-2714 Cell: 306-577-9971
 Email: tclees@signaldirect.ca
www.glenlees.com

Brooks Farms

Box 241, Alameda, SK S0C 0A0
 Blayne, Stacey, Ethan & Marshall: 306-485-7063
 Jeremy, Rachelle, Hudson & Ryker: 306-485-8003
 Blake, Amanda, Jack & Brynn: 306-485-8488
 Haley: 306-485-9216
 Email: jeremy_16@hotmail.com

Blairs. Ag Cattle Co.

Kevin & Noreen Blair; Darren & Deb Blair
 Box 610, Lanigan, SK S0K 2M0
 Kevin Blair: 306-365-7922 kevin@blairs.ag

Golden Oak Livestock

Bowden, AB
 Tom McNeely: 780-679-7220
 Email: tom@goldenoaklivestock.com

Auctioneer

Chris Poley 306-220-5006

Sale Day Phones

House 306-487-2670
 Karl Lischka 306-487-7794
 Karen Lischka 306-487-7793
 Cory Lischka 306-471-7733
 Corey Lees 306-577-9971
 Jeremy Brooks 306-485-8003
 Blayne Brooks 306-485-7063
 Blake Brooks 306-485-8488
 Tom McNeely 780-679-7220

Sale Staff

Ringside

Shane Michelson 403-363-9973
 Ben Wright 519-374-3335
 Levi Rimke 204-851-4515

Insurance Representative

Bonnie Thompson, Alameda Agencies 306-489-2258

Trucking Representative

H.S. Knill Co. Ltd. 877-442-3106

Accommodations

Bear Claw Casino & Lodge, Kenosee, SK 306-577-4588
 Days Inn, Estevan, SK 306-634-6456
 Super 8, Estevan, SK 306-634-8585
 Ramada, Carlyle, SK 306-453-2686
 Western Star, Carlyle, SK 306-453-2700

Catalogue Created By

Today's Publishing 306-933-4200

View the catalogue online at
www.buyagro.com

ANL Polled Herefords

Karl & Karen Lischka

Box 14, Steelman, SK, S0C 2J0

Phone: 306-487-2670 Cell: 306-487-7794 Email: lischka@sasktel.net

Visit www.anlpolledherefords.com

Cory, Brenden & Cayden Lischka: 306-471-7733

PROGRESS BY COMPARISON



1

ANL ACDT 244 **JADA** 115 ET 159K (DLF HYF IEF MSUDF)

PC03095998

KKL 159K

March 18, 2022

Polled Female

SHF FORESIGHT B413 F158 (DLF HYF IEF)
 SHF HODGEMAN F158 H244 (DLF HYF IEF MSUDF MDF)
 SHF MAGGIE 001A E109 (DLF HYF IEF)

EFBEEF BR VALIDATED B413 (DLF HYF IEF MSUDF MDF)
 SHF GERBER R117 Y200 (DLF HYF IEF)
 GERBER ANODYNE 001A (DLF HYF IEF MSUDF)
 SHF MAGGIE M326 X05 ET (DLF HYF IEF)

TH 745A 7B START ME UP 71D (DLF HYF IEF MSUDF)
 ANL 71D JADA 123C 115F (DLF HYF IEF MSUDF)
 ANL 91Z JADA 107Y 123C

REMITALL-W START ME UP ET 7B (DLF HYF IEF MSUDF MDF)
 RANGELINE 11Y MISS WORLD 745A (DLF HYF IEF)
 NJW 59R 88X RIBEYE 91Z (DLF HYF IEF)
 GOBLE JADA 107Y (DLF HYF IEF)

BW	EPDs	CE	BW	WW	YW	Milk	TM
90 lbs.		-12.7	8.3	86.7	145.0	29.5	72.9

Again the offspring from Jada 115F have excelled and 159k is on of the best. Genetically her sire is an out-cross with a powerful set of E.P.D.s. 159K is stout made, long sided, and soft made. She has the style and correctness of structure to take some heat in the show ring. Plus she will make an exceptional brood cow. **Owned with Danny & Calvin Fornwald, Golden Oak and AXA**



KKL 115F - Dam of Lot 1



KKL 141K- maternal sister lot 1

ANL POLLED HEREFORDS | HEIFER CALVES



2

PC03094190

KKL 10K

January 29, 2022

ANL 71D **LADY** 77G 10K
Polled Female

REMITALL-W START ME UP ET 7B (DLF HYF IEF MSUDF MDF)
TH 745A 7B START ME UP 71D (DLF HYF IEF MSUDF)
RANGELINE 11Y MISS WORLD 745A (DLF HYF IEF)

CB 57U CAN DOO 102Y (DLF HYF IEF MSUDF)
REMITALL-WEST MARVEL ET 76Y (DLF HYF IEF MDF)
BOYD WORLDWIDE 9050 ET (DLF HYF IEF MSUDF MDF)
RANGELINE 60S TEAR DROP 11Y

BOYD 31Z BLUEPRINT 6153 (DLF HYF IEF MSUDF MDF)
MOHICAN LADY 77G (DLF HYF IEF MSUDF)
CHURCHILL LADY 690D

R LEADER 6964 (DLF HYF IEF MSUDF)
NJW 91H 100W RITA 31Z ET (DLF HYF IEF)
C ETF WILDCAT 4248 ET (DLF HYF IEF)
CHURCHILL LADY 3185A ET

BW	EPDs	CE	BW	WW	YW	Milk	TM
87 lbs.		-1.5	4.6	67.9	104.1	26.2	60.2

A 71D that is big middle with extreme length. She has a balanced set of numbers and a mother that is hardworking and good uddered.

ANL POLLED HEREFORDS | HEIFER CALVES

3

ANL 36G **SASSY** 43D 45K

PC03094199 KKL 45K February 7, 2022 Polled Female

HAROLDSON'S UPGRADE T100 33D (DLF HYF IEF MSUDF)
 HAROLDSON'S UNITED 33D 36G (DLF HYF IEF MSUDF MDF)
 HAROLDSON'S WLC MIRA ET 52B (DLF HYF IEF MSUDF MDC)

SHF TAHOE R117 T100 (DLF HYF IEF MSUDF)
 MOHICAN MISSEY 93W (DLF HYF IEF)
 NIW 73S W18 HOMETOWN 10Y ET (DLF HYF IEF MSUDF MDC)
 HAROLDSON'S 37H MIRA ET 62K
 FHF 8403 STARBUCK 19H
 GV 579 VICTORIA 9710 (DLF HYF IEF)
 ANL SBS 36N TAYLOR 80S
 ANL 57G SASSY ET 74N

NIW FHF 9710 TANK 45P (DLF HYF IEF)
 ANL 45P SASSY 186W 43D
 ANL 80S SASSY 186W

BW	EPDs	CE	BW	WW	YW	Milk	TM
82 lbs.		-5.6	5.8	63.7	107.3	26.8	58.7

This United daughter has all the cosmetics. She is short-marked and dark in colour as well as being smooth made and big hiped. Her 45P dam is a consistent producer.



4

ANL 70H **DAWNE** 2041C 50K

PC03096709 KKL 50K February 8, 2022 Polled Female

TH 13Y 358C BOTTOM LINE 206E (DLF HYF IEF MSUDF MDF)
 ANL 206E BOTTOM LINE 12D 70H (DLF HYF IEF MSUDF)
 ANL 521X AVERI 81B 12D (DLF HYF IEF MSUDF MDF)

TH 403A 475Z PIONEER 358C ET (DLF HYF IEF MSUDF)
 TH 54W 719T BETH 13Y (DLF HYF IEF)
 TH 122 71I VICTOR 521X ET (DLF HYF IEF)
 ANL PT AVERI MAY 2348 81B (DLF HYF IEF)
 TH 122 71I VICTOR 521X ET (DLF HYF IEF)
 MHPH 301W DAINTY 205Y (DLF HYF IEF MSUDF MDF)
 TH 89T 743 UNTAPPED 425X ET (DLF HYF IEF)
 ANL B 7R DAWNE 120X

MHPH 521X ACTION 106A (DLF HYF IEF MSUDF)
 MHPH 106A DAWNE 2041C
 ANL B 425X DAWNE 11A

BW	EPDs	CE	BW	WW	YW	Milk	TM
82 lbs.		-3.5	4.8	72.3	116.6	25.5	61.7

This is a real complete made Bottom Line daughter with a powerful Action dam. She has tremendous doing ability and is super sound.



5

ANL 173D **LILY** 40F 14K

KKL 14K January 30, 2022 Polled Female

KCF BENNETT ENCORE Z311 ET (DLF HYF IEF MSUDF)
 NIW 79Z Z311 ENDURE 173D ET (DLF HYF IEF MSUDF MDF)
 BW 91H 100W RITA 79Z ET (DLF HYF IEF MSUDF MDF)

TH 745A 7B START ME UP 71D (DLF HYF IEF MSUDF)
 ANL 71D LILY 32X 40F
 MOHICAN LILY 32X (DLF HYF IEF)

SCHU-LAR ON TARGET 22S (DLF HYF IEF MSUDF)
 KCF MISS REVOLUTION X338 ET (DLF HYF IEF)
 NIW 73S M326 TRUST 100W ET (DLF HYF IEF MSUDF MDF)
 REMITALL RITA 91H (DLF HYF IEF)
 REMITALL-W START ME UP ET 7B (DLF HYF IEF MSUDF MDF)
 RANGELINE 11Y MISS WORLD 745A (DLF HYF IEF)
 TDP VINTAGE 402U ET (DLF HYF IEF)
 MOHICAN LILY 409R ET

BW	PE EPDs	CE	BW	WW	YW	Milk	TM
84 lbs.		0.5	4.6	69.3	112.9	28.7	63.3

Lily is short marked and long fronted. She has a real useful dam that is big bodied and has a good udder. Being an Endure daughter, this should add to maternal strength.



ANL POLLED HEREFORDS | BRED HEIFERS



6

PC03083356

KKL 29J

January 29, 2021

ANL DBK 4013 **MIRIAH** 106F 29J
Polled Female

EFBEEF TFL U208 TESTED X651 ET {DLF HYF IEF MSUDF}
INNISFAIL WHR X651/723 4013 ET {DLF HYF IEF MSUDF MDF}
INNISFAIL P230 T723 {DLF HYF IEF MSUDF}

EFBEEF FOREMOST U208 {DLF HYF IEF MSUDF}
EFBEEF P606 MABEL R415
EF F745 FRANK P230 {DLF HYF IEF MSUDF}
INNISFAIL 235 R501 ET {DLF HYF IEF}

TH 745A 7B START ME UP 71D
ANL 71D MIRIAH 54B 106F {DLF HYF IEF}
ANL 0220 MIRIAH 36Y ET 54B {DLF HYF IEF}

REMITALL-W START ME UP ET 7B {DLF HYF IEF MDF}
RANGELINE 11Y MISS WORLD 745A
BOYD MASTERPIECE 0220 {DLF HYF IEF MSUDF MDF}
ANL 45P MIRIAH 36Y {DLF HYF IEF}

BW	EPDs	CE	BW	WW	YW	Milk	TM
78 lbs.		-0.5	4.4	73.6	116.8	24.3	61.1

A definite sale feature right off the top of our replacements. 29J is sound in structure, big middle with loads of style. Out of a never miss cow family that are highly maternal with great udders. Sired by 4013 will just add power to her genetic ability.

Bred May 27 to GRH Z426 Excede 14H and exposed to Moorehaven Lian Rock ET 14H from June 10-Aug 4
Owned with Don and Betty Krueger

ANL POLLED HEREFORDS | BRED HEIFERS

7

PC03083366 KKL 77J February 11, 2021 Polled Female

EFBEEF TFL U208 TESTED X651 ET {DLF HYF IEF MSUDF}
 INNISFAIL WHR X651/723 4013 ET {DLF HYF IEF MSUDF MDF}
 INNISFAIL P230 T723 {DLF HYF IEF MSUDF}

TH 89T 743 UNTAPPED 425X ET {DLF HYF IEF}
 ANL 425X MISSY 65U 164E
 ANL P606 MISSY 65U {DLF HYF IEF}

ANL 4013 **MISSY** 164E 77J
 EFBEEF FOREMOST U208 {DLF HYF IEF MSUDF}
 EFBEEF P606 MABEL R415
 EF 745 FRANK P230 {DLF HYF IEF MSUDF}
 INNISFAIL 235 R501 ET {DLF HYF IEF}
 CRR ABOUT TIME 743 {DLF HYF IEF MDF}
 TH 16G 20N GEMINI 89T {DLF HYF IEF}
 PW VICTOR BOOMER P606 {DLF HYF IEF MDF}
 LAGRAND MISSY 74R ET {DLF HYF IEF}



BW	EPDs	CE	BW	WW	YW	Milk	TM
81 lbs.		0.2	4.1	65.3	103.4	23.4	56.1

We have always had the opinion that 77J would make a good cow prospect. You have P606 line bred in the bottom side of her pedigree. She is a hard 4013 daughter to part with.

Exposed to GRH Z426 Excede 14H from May 15 - May 28
Exposed to Moorehaven Lian Rock ET 14H from June 10-Aug 4



8

PC03096694

KKL 182J

March 19, 2021

ANL R 96G **LADY** 131C 182J
 Polled Female

TH 71U 17Y MOUNTAINEER 420A {DLF HYF IEF}
 ANL 420A TONIC 787X 96G {DLF HYF IEF MSUDF}
 VG KLONDIKE KATE 787X {DLF HYF IEF MSUDF}

TH 22R 16S LAMBEAU 17Y {DLF HYF IEF MSUDF MDF}
 TH 7N 45P RITA 71U {DLF HYF IEF}
 HF 4L BEYOND 36N {DLF HYF IEF}
 GHC MISS BELLE ET 98R

TH 113W 11X HI-TECH 17A {DLF HYF IEF MSUDF}
 ANL R 17A LADY 1238 131C
 H RW LADY REDEEM 1238 ET

TH 71U 719T MR HEREFORD T1X {DLF HYF IEF}
 TH 105S 755T GEMINI 113W {DLF HYF IEF}
 KJ HVH 33N REDEEM 485T ET {DLF HYF IEF}
 JSF 12N LADY VAL 9T {DLF HYF IEF}

BW	EPDs	CE	BW	WW	YW	Milk	TM
90 lbs.		-6.2	5.5	60.3	99.2	28.2	58.4

182J is a female that is almost flawless in design. She is long fronted, smooth made with great set of feet and legs. Her grand dam, at 11 years of age still has a near perfect udder.

Bred AI on April 29 to ANL 17A Hi Tech 58W 80C
Exposed to GRH Z426 Excede 14H from May 15- May 28
Exposed to Moorehaven Lian Rock ET 14H from June 10 - Aug 4

ANL POLLED HEREFORDS | BRED HEIFERS

This heifer is short marked, goggle eyed and dark red. Deep in her line with a super feminine look. Her sire 96G is doing a nice job in the good herd of Mike Goodine. **Bred AI on May 13 to ANL 17A Hi Tech 58W 80C**
Exposed to Moorehaven Lian Rock ET 14H from June 10 - Aug 4



9

PC03096693

KKL 155J

March 9, 2021

ANL 96G **DARLING** 168F 155J
Polled Female

TH 71U 17Y MOUNTAINEER 420A {DLF HYF IEF}
ANL 420A TONIC 787X 96G {DLF HYF IEF MSUDF}
VG KLONDIKE KATE 787X {DLF HYF IEF MSUDF}

TH 22R 16S LAMBEAU 17Y {DLF HYF IEF MSUDF MDF}
TH 7N 45P RITA 71U {DLF HYF IEF}
HF 4L BEYOND 36N {DLF HYF IEF}
GHC MISS BELLE ET 98R

LCX PERFECTO POWER 2D {DLF HYF IEF MSUDF}
ANL 2D DARLING 32D 168F
WLL DARLING 32D

LCX PERFECTO 11B ET {DLF HYF IEF MSUDF}
ELM-LODGE ZAHARA 54Z {DLF HYF IEF}
NJW 78P TWENTYTWELVE 190Z ET {DLF HYF IEF}
WLL YEN 29Y

BW	EPDs	CE	BW	WW	YW	Milk	TM
66 lbs.		1.0	3.2	51.4	82.7	25.3	50.0

31J is a moderate framed, deep sided female. She is easy fleshing and should be good uddered. Her grand dam 9Z is still going strong in herd. **Bred AI on May 11 to ANL 17A Hi Tech 58W 80C**
Exposed to Moorehaven Lian Rock ET 14H from June 10- Aug 4



10

PC03083357

KKL 31J

January 9, 2021

ANL C 68E **SIDNEY** 175C 31J
Polled Female

TH 71U 17Y MOUNTAINEER 420A {DLF HYF IEF}
ANL 420A MOUNTAINEER 787X 68E {DLF HYF IEF MSUDF}
VG KLONDIKE KATE 787X {DLF HYF IEF MSUDF}

TH 22R 16S LAMBEAU 17Y {DLF HYF IEF MSUDF MDF}
TH 7N 45P RITA 71U {DLF HYF IEF}
HF 4L BEYOND 36N {DLF HYF IEF}
GHC MISS BELLE ET 98R

JC RED ROCK 36Z {DLF HYF IEF}
ANL C 36Z SIDNEY 9Z 175C
MIL-WRAY SIDNEY 9Z

HAROLDSON'S WLCBUCK 19H ET 24T
JC 11G PEPPER 28P
GH ADAMS 179R STANLEY 180U
SQUARE-D TIELLA 908R

BW	EPDs	CE	BW	WW	YW	Milk	TM
80 lbs.		1.8	3.4	44.7	75.8	20.5	42.9



11

PC03084065

KKL 129J

March 1, 2021

ANL ACDT 7437 **JADA** 115 ET 129J (DLF HYF IEF MSUDF)
Polled Female

UPS SENSATION 2296 ET (DLF HYF IEF MSUDF MDF)
 H MONTGOMERY 7437 ET (DLF HYF IEF MSUDF MDF)
 RST GAT NST Y79D LADY 54B ET (DLF HYF IEF MSUDF)

CHURCHILL SENSATION 028X (DLF HYF IEF MDF)
 UPS JT MISS NEON 7811 1ET (DLF HYF IEF)
 WORR OWEN TANKERAY Y79D ET (DLF HYF IEF MSUDF)
 H H LADY MAXIUM 111 ET (DLF HYF IEF)

TH 745A 7B START ME UP 71D (DLF HYF IEF MSUDF)
 ANL 71D JADA 123C 115F (DLF HYF IEF MSUDF)
 ANL 91Z JADA 107Y 123C

REMITALL-W START ME UP ET 7B (DLF HYF IEF MSUDF MDF)
 RANGELINE 11Y MISS WORLD 745A (DLF HYF IEF)
 NJW 59R 88X RIBEYE 91Z (DLF HYF IEF)
 GOBLE JADA 107Y (DLF HYF IEF)

BW	EPDs	CE	BW	WW	YW	Milk	TM
82 lbs.		-7.2	4.9	62.1	107.0	33.6	64.7

This Jada daughter, out of Montgomery is a power female. She has plenty of bone, is high volume with extremely long body and pretty fronted.

A great set of E.P.Ds to go along with a strong maternal pedigree.

Bred to Moorehaven Lian Rock ET 14H on May 28 and exposed to Moorehaven 14H until Aug 4

Owned with Danny & Calvin Fornwald, Golden Oak and AXA

ANL POLLED HEREFORDS | BRED HEIFERS



12

PC03083350

KKL 14J

January 21, 2021

ANL TD 206E **ERIN** 136E 14J
Polled Female

TH 403A 475Z PIONEER 358C ET {DLF HYF IEF MSUDF}
TH 13Y 358C BOTTOM LINE 206E {DLF HYF IEF MSUDF MDF}
TH 54W 719T BETH 13Y {DLF HYF IEF}

TH 89T 755T STOCKMAN 475Z {DLF HYF IEF}
TH 71U 17Y RITA 403A {DLF HYF IEF}
TH 122 71I VICTOR 719T {DLF HYF IEF MSUDF MDF}
TH 6S 45P BETH 54W {DLF HYF IEF}

ANL 17A HI TECH 58W 80C {DLF HYF IEF}
ANL 80C ERIN 26R 136E
SB P606 ERIN 26R ET

TH 113W 11X HI-TECH 17A {DLF HYF IEF MSUDF}
MOHICAN VIOLET 58W {DLF HYF IEF}
PW VICTOR BOOMER P606 {DLF HYF IEF MDF}
RU 20X ERIN 54E

BW	EPDs	CE	BW	WW	YW	Milk	TM
80 lbs.		-1.8	3.7	62.7	105.7	25.1	56.5

14J is a well balanced, deep flanked female that really catches you eye. The strong maternal side of her pedigree has the cowmaker P606 just three generations back. Not a lot of guess work left here!

Bred AI on May 1 to CSC 701 Bolder 901
Exposed to Moorehaven Lian Rock ET 14H from May 28 - Aug 4
Owned by Trevor and Christina Deren

ANL POLLED HEREFORDS | BRED HEIFERS

206J is a dark red female that has an impressive look. She has a very balanced set of numbers, along with good udders and teat score. The Bottom Line females have good udders and milk well.

Exposed to Moorehaven Lian Rock ET 14H from May 28 - Aug 4 Observed bred June 1



13
PC03083401

TH 403A 475Z PIONEER 358C ET {DLF HYF IEF MSUDF}
TH 13Y 358C BOTTOM LINE 206E {DLF HYF IEF MSUDF MDF}
TH 54W 719T BETH 13Y {DLF HYF IEF}

KKL 206J

TH 89T 755T STOCKMAN 475Z {DLF HYF IEF}
TH 71U 17Y RITA 403A {DLF HYF IEF}
TH 122 71I VICTOR 719T {DLF HYF IEF MSUDF MDF}
TH 6S 45P BETH 54W {DLF HYF IEF}

March 25, 2021

TH 113W 11X HI-TECH 17A {DLF HYF IEF MSUDF}
ANL 17A TAMMY 47Y 94D
MA 744T TAMMY 16U 47Y {DLF HYF IEF}

ANL 206E **TAMMY** 94D 206J
Polled Female

TH 71U 719T MR HEREFORD 11X {DLF HYF IEF}
TH 105S 755T GEMINI 113W {DLF HYF IEF}
JJPH 910J 36N ARSENAL 744T
MEADOW-ACRES HR TAMMY ET 16U

BW	EPDs	CE	BW	WW	YW	Milk	TM
72 lbs.		2.0	2.7	58.1	100.6	26.3	55.4

Here is a long bodied, smooth made heifer who is very nice front ended. 154J has lots of rib shape and is deep bodied. This female will look good in a lot of herds.
Bred AI on April 30 to ANL 17A Hi Tech 58W 80C
Exposed to GRH Z426 Excede 14H from May 15 - May 28
Exposed to Moorehaven Lian Rock ET 14H from June 10- Aug 4



14
PC03096697

TH 403A 475Z PIONEER 358C ET {DLF HYF IEF MSUDF}
TH 13Y 358C BOTTOM LINE 206E {DLF HYF IEF MSUDF MDF}
TH 54W 719T BETH 13Y {DLF HYF IEF}

KKL 154J

TH 89T 755T STOCKMAN 475Z {DLF HYF IEF}
TH 71U 17Y RITA 403A {DLF HYF IEF}
TH 122 71I VICTOR 719T {DLF HYF IEF MSUDF MDF}
TH 6S 45P BETH 54W {DLF HYF IEF}

March 9, 2021

TH 113W 11X HI-TECH 17A {DLF HYF IEF MSUDF}
ANL 17A COREY'S 49W 162D
ANL 7R COREY'S 49W

ANL 206E **COREY'S** 162D 154J
Polled Female

TH 71U 719T MR HEREFORD 11X {DLF HYF IEF}
TH 105S 755T GEMINI 113W {DLF HYF IEF}
FCC 36N ABSOLUTE 7R
COREY'S ONLINE 138N

BW	EPDs	CE	BW	WW	YW	Milk	TM
68 lbs.		-1.1	4.1	61.6	104.5	25.0	55.8

ANL POLLED HEREFORDS | BRED HEIFERS



15

PC03096692

KKL 85J

February 14, 2021

TH 403A 475Z PIONEER 358C ET {DLF HYF IEF MSUDF}
 TH 13Y 358C BOTTOM LINE 206E {DLF HYF IEF MSUDF MDF}
 TH 54W 719T BETH 13Y {DLF HYF IEF}

TH 89T 755T STOCKMAN 475Z {DLF HYF IEF}
 TH 71U 17Y RITA 403A {DLF HYF IEF}
 TH 122 71I VICTOR 719T {DLF HYF IEF MSUDF MDF}
 TH 6S 45P BETH 54W {DLF HYF IEF}

TH 133U 719T UPGRADE 69X {DLF HYF IEF}
 MOHICAN VICKY Z5 {DLF HYF IEF}
 MOHICAN VICKY 25X {DLF HYF IEF}

BW	EPDs	CE	BW	WW	YW	Milk	TM
78 lbs.		3.4	2.7	62.0	108.3	28.9	59.9

ANL 206E **VICKY** Z5 85J
 Polled Female

TH 122 71I VICTOR 719T {DLF HYF IEF}
 TH 14S 103R MEGAN 133U {DLF HYF IEF}
 SHF RIB EYE M326 R117 {DLF HYF IEF}
 MOHICAN VICKY 23U



16

PC03083382

KKL 141J

March 5, 2021

TH 403A 475Z PIONEER 358C ET {DLF HYF IEF MSUDF}
 TH 13Y 358C BOTTOM LINE 206E {DLF HYF IEF MSUDF MDF}
 TH 54W 719T BETH 13Y {DLF HYF IEF}

TH 89T 755T STOCKMAN 475Z {DLF HYF IEF}
 TH 71U 17Y RITA 403A {DLF HYF IEF}
 TH 122 71I VICTOR 719T {DLF HYF IEF MSUDF MDF}
 TH 6S 45P BETH 54W {DLF HYF IEF}

NJW 98S 100W HANDSHAKE 82Y {DLF HYF IEF MDF}
 MOHICAN PLUS 424B {DLF HYF IEF}
 MOHICAN PLUS 409T ET {DLF HYF IEF}

BW	EPDs	CE	BW	WW	YW	Milk	TM
85 lbs.		-3.8	5.1	67.1	115.8	26.5	60.1

ANL 206E **PLUS** 424B 141J
 Polled Female

These Bottom Line females just have that extra punch. Very easy to maintain and are really making excellent cows. Her dam comes from Mohican West and has been a great asset.

Bred AI on April 29 to ANL 17A Hi Tech 58W 80C
 Exposed to GRH Z426 Excede 14H from May 15 to May 28
 Exposed to Moorehaven Lian Rock ET 14H from June 10 - Aug 4

NJW 73S M326 TRUST 100W ET {DLF HYF IEF MSUDF MDF}
 NJW 9126J DEW DOMINO 98S {DLF HYF IEF}
 REMITALL PATRIOT ET 13P {DLF HYF IEF}
 MOHICAN PLUS 107M



17
PC03083380

KKL 121J

February 26, 2021

ANL R 206E **VANITY** 100E 121J
Polled Female

TH 403A 475Z PIONEER 358C ET {DLF HYF IEF MSUDF}
TH 13Y 358C BOTTOM LINE 206E {DLF HYF IEF MSUDF MDF}
TH 54W 719T BETH 13Y {DLF HYF IEF}

TH 89T 755T STOCKMAN 475Z {DLF HYF IEF}
TH 71U 17Y RITA 403A {DLF HYF IEF}
TH 122 71I VICTOR 719T {DLF HYF IEF MSUDF MDF}
TH 6S 45P BETH 54W {DLF HYF IEF}

TH 113W 11X HI-TECH 17A {DLF HYF IEF MSUDF}
ANL R 17A VANITY 79B 100E
ANL R 425X VANITY 27U 79B

TH 71U 719T MR HEREFORD 11X {DLF HYF IEF}
TH 105S 755T GEMINI 113W {DLF HYF IEF}
TH 89T 743 UNTAPPED 425X ET {DLF HYF IEF}
ANL R P606 VANITY 27U

BW	EPDs	CE	BW	WW	YW	Milk	TM
78 lbs.		-0.2	3.6	60.1	102.1	25.0	55.1

A female that is hard to fault. Very feminine and sound made. Beautifully made through her front third. Her dam is a moderate framed cow with a lot of volume and excellent udder.

Bred AI May 2 to ANL 17A Hi Tech 58W 80C
Exposed to GRH Z426 Excede 14H from May 15- May 28
Exposed to Moorehaven Lian Rock ET 14H from June 10 - Aug 4

ANL POLLED HEREFORDS | BRED HEIFERS



18

PC03083376

KKL 96J

February 16, 2021

ANL 174E **CAROLINA** 127G 96J
Polled Female

TH 403A 475Z PIONEER 358C ET {DLF HYF IEF MSUDF}
TH FRONTIER 174E {DLF HYF IEF MSUDF MDF}
FTF TRUSTING LADY 312A

TH 89T 755T STOCKMAN 475Z {DLF HYF IEF}
TH 71U 17Y RITA 403A {DLF HYF IEF}
NIW 73S M326 TRUST 100W ET {DLF HYF IEF MSUDF MDF}
FTF BOOM AND BLOOM 8211U {DLF HYF IEF}

TH 745A 7B START ME UP 71D {DLF HYF IEF MSUDF}
ANL 71D CAROLINA 81Y 127G
ANL 50W CAROLINA 81Y

REMITALL-W START ME UP ET 7B {DLF HYF IEF MSUDF MDF}
RANGELINE 11Y MISS WORLD 745A {DLF HYF IEF}
ANL 101S MADISON 50W {DLF HYF IEF}
ANL 4M CAROLINA 163R

BW	EPDs	CE	BW	WW	YW	Milk	TM
53 lbs.		10.5	-1.6	56.6	91.6	31.1	59.4

This heifer is hard to part with being a Frontier 174E daughter. They are making great cows by all reports. This would be a catch as there is almost no 174E semen left.

Bred to GRH Z426 Excede 14H on May 15
Exposed to Moorehaven Lian Rock ET 14H from June 10 - Aug 4

ANL POLLED HEREFORDS | BRED HEIFERS

55J is a soggy made 71d daughter that is really sound in structure. She has a lower birth weight with exceptional growth.

Bred to GRH Z426 Excede 14H on May 2
Exposed to Moorehaven Lian Rock ET 14H from May 28 - Aug 4.



19

PC03083361

REMITALL-W START ME UP ET 7B {DLF HYF IEF MSUDF MDF}
 TH 745A 7B START ME UP 71D {DLF HYF IEF MSUDF}
 RANGELINE TIY MISS WORLD 745A {DLF HYF IEF}

KKL 55J

CB 57U CAN DOO 102Y {DLF HYF IEF MSUDF}
 REMITALL-WEST MARVEL ET 76Y {DLF HYF IEF MDF}
 BOYD WORLDWIDE 9050 ET {DLF HYF IEF MSUDF MDF}
 RANGELINE 60S TEAR DROP TIY

February 4, 2021

WSF CAN-AM PRINCE 143 {DLF HYF IEF}
 ANL C 143 HOPPER 2T 46C
 C&T BMW 69R HOPPER 2T

ANL C 71D **HOPPER** 46C 55J
 Polled Female

RVP STAR 533P CAN-AM ET 57U {DLF HYF IEF}
 THM 71I PRINCESS PRIME 8695 {DLF HYF IEF}
 HAROLDSON'S WARRIOR 005 19R
 C&T 51K GRASSHOPPER 69R

BW	EPDs	CE	BW	WW	YW	Milk	TM
78 lbs.		1.4	2.4	56.1	89.3	19.7	47.8

A big bodied female that is long sided and easy on the eyes. The 71D daughters are great producing cows.
Bred AI on May 4 to ANL 17A Hi Tech 58W 80C
Exposed to Moorehaven Lian Rock ET 14H from May 28 - Aug 4



20

PC03083362

REMITALL-W START ME UP ET 7B {DLF HYF IEF MSUDF MDF}
 TH 745A 7B START ME UP 71D {DLF HYF IEF MSUDF}
 RANGELINE TIY MISS WORLD 745A {DLF HYF IEF}

KKL 59J

CB 57U CAN DOO 102Y {DLF HYF IEF MSUDF}
 REMITALL-WEST MARVEL ET 76Y {DLF HYF IEF MDF}
 BOYD WORLDWIDE 9050 ET {DLF HYF IEF MSUDF MDF}
 RANGELINE 60S TEAR DROP TIY

February 5, 2021

ANL 17A HI TECH 13X 19C {DLF HYF IEF MSUDF}
 ANL 19C MELANIE 3756 192E
 WCC 30X MELANIE 3756A

ANL 71D **MELANIE** 192E 59J
 Polled Female

TH 113W 11X HI-TECH 17A {DLF HYF IEF MSUDF}
 RVP 45S SINGLE ME OUT 13X
 SQUARE-D AXLE 30X {DLF HYF IEF}
 SQUARE-D MELANIE 756S

BW	EPDs	CE	BW	WW	YW	Milk	TM
86 lbs.		-2.1	3.9	57.3	92.6	24.3	53.0

ANL POLLED HEREFORDS | BRED HEIFERS



A younger female that is really sweet made and functional. Her dam is a consistent producer.

Bred to GRH Z426 Excede 14H on May 25
Exposed to Moorehaven Lian Rock ET 14H from June 10 - Aug 4

21

PC03083405

KKL 221J

April 3, 2021

ANL C 83F **AILEEN** 175F 221J
Polled Female

TH 745A 7B START ME UP 71D {DLF HYF IEF MSUDF MDF}
 ANL 71D START ME UP 51A 83F {DLF HYF IEF}
 JHF LINDA 51A {DLF HYF IEF MSUDF MDF}

REMITALL-W START ME UP ET 7B {DLF HYF IEF MSUDF MDF}
 RANGELINE 11Y MISS WORLD 745A {DLF HYF IEF}
 ANL 83T ELI ET 8X {DLF HYF IEF}
 MICGIL'S LINDA 24R 36U
 ANL 420A MOUNTAINEER 95A 93D {DLF HYF IEF}
 ANL C 93D AILEEN 102D 175F
 ANL C 425X AILEEN 8A 102D

TH 71U 17Y MOUNTAINEER 420A {DLF HYF IEF}
 ANL 425X JADE 95A
 TH 89T 743 UNTAPPED 425X ET {DLF HYF IEF}
 TIL-TOBA AILEEN 5R 8A

BW	EPDs	CE	BW	WW	YW	Milk	TM
77 lbs.		-2.2	4.9	60.3	97.7	18.8	49.0



236J is a big ribbed and easy doing heifer. One of the youngest females in the sale with an excellent dam who has a gorgeous udder.

Bred on May 15 to GRH Z426 Excede 14H and exposed to 14H till May 28
Exposed to Moorehaven Lian Rock ET 14H from June 10 to Aug 4

22

PC03083409

KKL 236J

April 17, 2021

ANL C 84F **MISTY** 52D 236J
Polled Female

TH 745A 7B START ME UP 71D {DLF HYF IEF MSUDF MDF}
 ANL C 71D START ME UP 17Z 84F {DLF HYF IEF}
 TIL-TOBA ZULA 39S 17Z

REMITALL-W START ME UP ET 7B {DLF HYF IEF MSUDF MDF}
 RANGELINE 11Y MISS WORLD 745A {DLF HYF IEF}
 TIL-TOBA SIGN UP 11J 11S {DLF HYF IEF}
 TIL-TOBA STAR 31K 39S
 TH 89T 743 UNTAPPED 425X ET {DLF HYF IEF}
 ANL C 425X MISTY 25U 52D
 MIL-WRAY MISTY 25U

CRR ABOUT TIME 743 {DLF HYF IEF MDF}
 TH 16G 20N GEMINI 89T {DLF HYF IEF}
 ANL 4L MATADOR 76P
 MIL-WRAY RENAE 35P

BW	EPDs	CE	BW	WW	YW	Milk	TM
85 lbs.		-1.2	4.6	54.1	90.2	19.8	46.9

ANL POLLED HEREFORDS | BRED HEIFERS

TH 71D daughters are just consistent producers and 52J should follow in their footsteps.
Bred to GRH Z426 Excede 14H on May 5 and exposed to 14H to May 28
Exposed to Moorehaven Lian Rock ET 14H from June 10-Aug 4



TH 745A 7B START ME UP 71D

23

PC03083360

KKL 52J

February 3, 2021

ANL C 71D **CELEBRITY** 34A 52J
 Polled Female

REMITALL-W START ME UP ET 7B (DLF HYF IEF MSUDF MDF)
 TH 745A 7B START ME UP 71D (DLF HYF IEF MSUDF)
 RANGELINE TIY MISS WORLD 745A (DLF HYF IEF)

CB 57U CAN DOO 102Y (DLF HYF IEF MSUDF)
 REMITALL-WEST MARVEL ET 76Y (DLF HYF IEF MDF)
 BOYD WORLDWIDE 9050 ET (DLF HYF IEF MSUDF MDF)
 RANGELINE 60S TEAR DROP TIY

MEADOW-ACRES CONNECTED 13K 86R
 MIL-WRAY CELEBRITY 34A
 GWG 25N HELEN 26U

BLAIR-ATHOL 65F ON LINE 13K
 MEADOW-ACRES 66E ADA 102M 5G
 GWG 4L RADAR 25N
 GWG 37L PEONY 23P

BW	EPDs	CE	BW	WW	YW	Milk	TM
80 lbs.		-0.6	3.7	553	89.7	18.4	46.1

This 80C daughter brings a lot of style and correctness to the table. Nice fronted with all the colour and cosmetics. Her two year old did a super job of raising 136J
Bred to GRH Z426 Excede 14H on May 15 and exposed to 14H until May 28
Exposed to Moorehaven Lian Rock ET 14H from June 10 to Aug 4



24

PC03083381

KKL 136J

March 4, 2021

ANL R&L 80C **VERA** 155G 136J
 Polled Female

TH 113W 11X HI-TECH 17A (DLF HYF IEF MSUDF)
 ANL 17A HI TECH 58W 80C (DLF HYF IEF)
 MOHICAN VIOLET 58W (DLF HYF IEF)

TH 71U 719T MR HEREFORD 11X (DLF HYF IEF)
 TH 105S 755T GEMINI 113W (DLF HYF IEF)
 SHF RIB EYE M326 R117 (DLF HYF IEF)
 CS GPR ROCK'S VIOLET 152S

TH 89T 743 UNTAPPED 425X ET (DLF HYF IEF)
 ANL C 425X VERA 146C 155G
 ANL C 36Z ZEVA 40Z 146C

CRR ABOUT TIME 743 (DLF HYF IEF MDF)
 TH 16G 20N GEMINI 89T (DLF HYF IEF)
 JC RED ROCK 36Z (DLF HYF IEF)
 TIL-TOBA ZEVA 5R 40Z

BW	EPDs	CE	BW	WW	YW	Milk	TM
73 lbs.		1.0	3.1	55.4	89.2	22.1	49.8

ANL POLLED HEREFORDS | BRED HEIFERS



25

PC03083374

TH 113W 11X HI-TECH 17A {DLF HYF IEF MSUDF}
 ANL 17A HI TECH 58W 80C {DLF HYF IEF}
 MOHICAN VIOLET 58W {DLF HYF IEF}

KKL 93J

TH 71U 719T MR HEREFORD 11X {DLF HYF IEF}
 TH 105S 755T GEMINI 113W {DLF HYF IEF MSUDF}
 SHF RIB EYE M326 R117 {DLF HYF IEF}
 CS GPR ROCK'S VIOLET 152S

February 16, 2021

TH 745A 7B START ME UP 71D {DLF HYF IEF MSUDF}
 ANL C 71D MAPLE 38C 125F
 ANL C HAR 425X MAPLE 86 ET 38C {DLF HYF IEF}

ANL C 80C **MAPLE** 125F 93J
 Polled Female

REMITALL-W START ME UP ET 7B {DLF HYF IEF MSUDF MDF}
 RANGELINE 11Y MISS WORLD 745A {DLF HYF IEF}
 TH 89T 743 UNTAPPED 425X ET {DLF HYF IEF}
 ANL 7N MAPLE 86R {DLF HYF IEF}

BW	EPDs	CE	BW	WW	YW	Milk	TM
71 lbs.		4.0	1.8	57.5	90.7	23.4	52.2

93J has one of the deepest pedigrees in our offering. She is attractive in design and super sound in structure. Her udder development is looking really good. Her dam is one of the very best young cows on the farm. Take a second look at this one!

Bred AI on May 2 to Glenlees 27C Kreed 3H. Exposed to GRH Z426 Excede 14H May 15 to May 28
Exposed to Moorehaven Lian Rock ET 14H from June 10 to Aug 4



26 **PC03097452** **KKL 30J** **January 29, 2021** **ANL C 8Y BOOMAH 94F 30 {MDF}** **Polled Female**

SHF WONDER M326 W18 ET {DLF HYF IEF MDF}
 NJW 73S W18 HOMEGROWN 8Y ET {DLF HYF IEF MSUDF MDF}
 NJW P606 72N DAYDREAM 73S {DLF HYF IEF MSUDF MDF}

KCF BENNETT 3008 M326 {DLF HYF IEF MDF}
 SHF GOVERNESS 236G L37 {DLF HYF IEF MDF}
 PW VICTOR BOOMER P606 {DLF HYF IEF MDF}
 NJW 94J DEW 72N {DLF HYF IEF}

ANL 17A HI TECH 58W 80C {DLF HYF IEF}
 ANL C 80C BOOMAH 103Y 94F
 BLAIR-ATHOL 13K BOOMAH 103Y

TH 113W 11X HI-TECH 17A {DLF HYF IEF MSUDF}
 MOHICAN VIOLET 58W {DLF HYF IEF}
 BLAIR-ATHOL 65F ON LINE 13K
 RVP 80P UTMOST 46U

BW	EPDs	CE	BW	WW	YW	Milk	TM
82 lbs.		3.0	2.9	53.7	92.0	34.6	61.5

This high volume female has a real broody look. Her dam has a very good udder, with small short teats. The Home Grown females are making a name for themselves.
Bred May 20 to GRH Z426 Excede 14H and exposed to 14H until May 28
Exposed to Moorehaven Lian Rock ET 14H from June 10 - Aug 4

ANL POLLED HEREFORDS | BRED HEIFERS



27

PC03097600 KKL 149J

ANL J&R 8Y **LADY** 102E 149J {MDF}
March 8, 2021 Polled Female

SHF WONDER M326 W18 ET {DLF HYF IEF MDC}
NWJ 73S W18 HOMEGROWN 8Y ET {DLF HYF IEF MSUDF MDC}
NWJ P606 72N DAYDREAM 73S {DLF HYF IEF MSUDF MDC}

ANL 17A HI TECH 58W 80C {DLF HYF IEF}
ANL 80C LADY 65Z 102E
ANL 409W LADY 153W 65Z

KCF BENNETT 3008 M326 {DLF HYF IEF MDF}
SHF GOVERNESS 236G L37 {DLF HYF IEF MDF}
PW VICTOR BOOMER P606 {DLF HYF IEF MDF}
NWJ 94J DEW 72N {DLF HYF IEF}
TH 113W 11X HI-TECH 17A {DLF HYF IEF MSUDF}
MOHICAN VIOLET 58W {DLF HYF IEF}
MOHICAN WAR DRUM 409W ET {DLF HYF IEF}
ANL 80S NORTHERN LADY 153W

BW	EPDs	CE	BW	WW	YW	Milk	TM
90 lbs.		-2.8	4.7	57.8	95.2	33.5	62.4

149J has the depth and length to make a hard working cow. Her dam is a power cow with a really good udder and small teats.

Bred to Moorehaven Lian Rock ET 14H on May 29 and exposed to Rock 14H from May 28- Aug 4



28

PC03097453 KKL 40J

ANL 8Y **BAMBI** 188A 40J {MDC}
January 31, 2021 Polled Female

SHF WONDER M326 W18 ET {DLF HYF IEF MDC}
NWJ 73S W18 HOMEGROWN 8Y ET {DLF HYF IEF MSUDF MDC}
NWJ P606 72N DAYDREAM 73S {DLF HYF IEF MSUDF MDC}

HAROLDSON'S MOOMBA 45P 15X {DLF HYF IEF}
XLP MDF 15X BAMBI 188A
XLP MDF 1131W BAMBI 188Y

KCF BENNETT 3008 M326 {DLF HYF IEF MDF}
SHF GOVERNESS 236G L37 {DLF HYF IEF MDF}
PW VICTOR BOOMER P606 {DLF HYF IEF MDF}
NWJ 94J DEW 72N {DLF HYF IEF}
NWJ FHF 9710 TANK 45P {DLF HYF IEF MDF}
LRL MISS LAKES 50K 57M
MHPH 2N WEBSTER 1131W {DLF HYF IEF}
XLP 2103 BAMBI 1008P {DLF HYF IEF}

BW	EPDs	CE	BW	WW	YW	Milk	TM
80 lbs.		4.7	2.6	48.6	82.4	31.0	55.3

This is a nice made Home Grown female with the softness and style to compliment her power. Pound for pound, her dam is hard to keep up with.

**Bred to GRH Z426 Excede 14H on May 20 and exposed to 14H until May 28
Exposed to Moorehaven Lian Rock ET 14H from June 10- Aug 4**



29

PC03097455 KKL 112J

ANL 8Y **RANDI** 31E 112J {MDC}
February 21, 2021 Polled Female

SHF WONDER M326 W18 ET {DLF HYF IEF MDC}
NWJ 73S W18 HOMEGROWN 8Y ET {DLF HYF IEF MSUDF MDC}
NWJ P606 72N DAYDREAM 73S {DLF HYF IEF MSUDF MDC}

ANL 17A HI TECH 58W 80C {DLF HYF IEF}
ANL 80C RANDI 10A 31E
ANL P606 RANDI 10A

KCF BENNETT 3008 M326 {DLF HYF IEF MDF}
SHF GOVERNESS 236G L37 {DLF HYF IEF MDF}
PW VICTOR BOOMER P606 {DLF HYF IEF MDF}
NWJ 94J DEW 72N {DLF HYF IEF}
TH 113W 11X HI-TECH 17A {DLF HYF IEF MSUDF}
MOHICAN VIOLET 58W {DLF HYF IEF}
PW VICTOR BOOMER P606 {DLF HYF IEF MDF}
ANL 53S RANDI 106U

BW	EPDs	CE	BW	WW	YW	Milk	TM
94 lbs.		-2.6	4.8	59.2	97.6	36.0	65.6

This is a big volume 8Y daughter with the potential to turn into a great producing cow. High quality udders and milk flow run deep in this cow family.

**Bred to GHR Z426 Excede 14H on May 13 and exposed to 14H until May 28
Exposed to Moorehaven Lian Rock ET 14H from June 10- Aug 4**

ANL POLLED HEREFORDS | BRED HEIFERS

This is the only Freeman daughter to sell in the sale and she is an excellent choice. She is very long spine with lots of middle and cosmetics. She has a performance set of EPDs.

Bred AI on May 9 to ANL 17A High Tech 58W 80C and exposed to GRH Z426 Excede 14H until May 28. Exposed to Moorehaven Lian Rock ET 14H from June 10 - Aug 4



30

PC03083378

WLB HOME RUN 8Y 112C {DLF HYF IEF MDC}
DTHF FREEMAN 289F {DLF HYF IEF MSUDF MDC}
DTHF CHERILYNE 89C

KKL 106J

NJW 73S W18 HOMEGROWN 8Y ET {DLF HYF IEF MSUDF MDC}
WLB 10H MARY 28T
ANL DM 719T VICTOR 76S ET 47Z {DLF HYF IEF}
DTHF LYNNE 183X

February 19, 2021

ANL 420A MOUNTAINEER 51A 32E {DLF HYF IEF}
ANL 32E MINDY 7Z 21G
ANL 719T MINDY 39W 7Z

ANL 289F **MINDY** 21G 106J {MDF}
Polled Female

TH 71U 17Y MOUNTAINEER 420A {DLF HYF IEF}
JHF LINDA 51A {DLF HYF IEF MSUDF}
TH 122 71I VICTOR 719T {DLF HYF IEF MSUDF MDF}
ANL 145R MINDY 39W

BW	EPDs	CE	BW	WW	YW	Milk	TM
89 lbs.		-4.1	6.1	62.4	101.3	27.4	58.6

169J is a Warrior daughter that clicks all the boxes. Genetically and phenotypically sound.

Bred to Moorehaven Lian Rock ET 14H on May 29 and exposed to Rock 14H from May 28 - Aug 4



ANL J&R 845C WARRIOR 83E 111G

31

PC03096695

WHITEHAWK WARRIOR 845C ET {DLF HYF IEF MSUDF MD}
ANL J&R 845C WARRIOR 83E 111G {DLF HYF IEF MSUDF}
ANL C 420A ALRIGHT 67C 83E

KKL 169J

UPH PROSPECTOR P152 {DLF HYF IEF}
GRANDVIEW CMR 4003 BETH Y115ET {DLF HYF IEF}
TH 71U 17Y MOUNTAINEER 420A {DLF HYF IEF}
ANL C 23Z ALRIGHT 2A 67C

March 14, 2021

ANL 420A MOUNTAINEER 95A 93D {DLF HYF IEF}
ANL 93D RENEE 175E 229G
ANL 17A RENEE 59Z 175E

ANL 111G **RENEE** 229G 169J
Polled Female

TH 71U 17Y MOUNTAINEER 420A {DLF HYF IEF}
ANL 425X JADE 95A
ANL 17A HI TECH 13X 19C {DLF HYF IEF MSUDF}
ANL 719T RENEE 92R ET 59Z {DLF HYF IEF}

BW	EPDs	CE	BW	WW	YW	Milk	TM
73 lbs.		-2.8	4.3	60.9	96.1	27.5	57.9

ANL POLLED HEREFORDS | BRED HEIFERS



32

PC03097454

KKL 111J

February 21, 2021

NJW 76S 4037 DURANGO SPIRIT 174X (DLF HYF IEF MDF)
 NW 103Y 174X DIABLO 156C ET (DLF HYF IEF MSUDF)
 NJW 101U 100W SPIRITQUEEN103Y (DLF HYF IEF MSUDF MDF)

THM DURANGO 4037 (DLF HYF IEF)
 NJW 55N STARDUST 76S (DLF HYF IEF MSUDF MDF)
 NJW 73S M326 TRUST 100W ET (DLF HYF IEF MSUDF MDF)
 NJW 4037 55N FREE SPIRIT 101U (DLF HYF IEF)

SQUARE-D CENTURY 957B (DLF HYF IEF MSUDF MDF)
 BLAIR-ATHOL 957B MELANIA 132G
 SQUARE-D MADONNA 81E

ANL C 156C **MELANIA** 132G 111J
 Polled Female

NJW 73S W18 HOMEGROWN 8Y ET (DLF HYF IEF MSUDF MDC)
 SQUARE-D JAEDEN 257P (DLF HYF IEF)
 NJW 73S 22Z MIGHTY MAX 69B ET (DLF HYF IEF)
 MCCOY 31Y ZENA 81A

BW	PE EPDs	CE	BW	WW	YW	Milk	TM
83 lbs.		9.0	1.1	54.2	84.3	32.1	59.2



33

PC03083410

KKL 238J

April 21, 2021

ANL C HAR T100 TAHOE 86 ET 23B (DLF HYF IEF MSUDF MDF)
 ANL 23B TAHOE 36Y 70F (DLF HYF IEF)
 ANL 45P MIRIAH 36Y (DLF HYF IEF)

SHF TAHOE R117 T100 (DLF HYF IEF MSUDF)
 ANL 7N MAPLE 86R (DLF HYF IEF)
 NJW FHF 9710 TANK 45P (DLF HYF IEF MDF)
 ANL 98K MIRIAH 153S

TH 89T 743 UNTAPPED 425X ET (DLF HYF IEF)
 ANL 425X LILA 0074 ET 157D (DLF HYF IEF MSUDF)
 H GO LILA DELIGHT 0074 ET (DLF HYF IEF)

ANL 70F **LILA** 157D 238J
 Polled Female

CRR ABOUT TIME 743 (DLF HYF IEF MDF)
 TH 16G 20N GEMINI 89T (DLF HYF IEF)
 HH ADVANCE 8203U ET (DLF HYF IEF)
 GO MS 293 MARK DOM L57 (DLF HYF IEF)

BW	EPDs	CE	BW	WW	YW	Milk	TM
92 lbs.		-6.1	6.8	62.0	100.1	23.7	54.7

BROOKS FARMS

Box 241, Alameda, SK S0C 0A0
Blayne, Stacey, Ethan & Marshall: 306-485-7063
Jeremy, Rachelle, Hudson & Ryker: 306-485-8003
Blake, Amanda, Jack & Brynn: 306-485-8488
Haley: 306-485-9216
 Email: jeremy_16@hotmail.com



34

PC03093977

BRKS 21K

February 18, 2022

BROOKS 3H 36C **KATE** 21K
 Polled Female

NJW 73S 38W RIMROCK 27C ET (DLF HYF IEF MSUDF MDF) NJW 76S P20 BEEF 38W ET (DLF HYF IEF MSUDF MDF) H SWSN REDEEM 2429 ET (DLF HYF IEF)
 GLENLEES 27C KREED 3H (DLF HYF IEF MSUDF) HAROLDSON'S WLL ANCHOR 4T BROOKS 2429 KATE 36C K&B LADY SENTRY 8090U (DLF HYF IEF MSUDF MDF)
 HAROLDSON'S CARLA 4T 55Y (DLF HYF IEF) HAROLDSON'S CARLA 11P 37U BROOKS 53W KATE 14A ANL 83T WINFIELD 53W (DLF HYF IEF)
 ROSELAWN KATE 877 59X

BW	EPDs	CE	BW	WW	YW	Milk	TM
74 lbs.		1.3	3.1	47.8	82.1	24.0	47.9

Crisp in her lines and short marked. Was alongside her dam when she was named res champion female at the 2022 S.E. Hereford Zone field day at the age of 7. Kate 36C has been one of most consistent producers. Two other daughters have been class winner at CWA. Maternal sisters at Glenlees and ANL. Two others are retained in herd.

BROOKS FARMS | HEIFER CALVES



35
PC03093970 **BRKS 27K** **February 20, 2022** **BROOKS 3H 31X ALISON 27K**
Polled Female

NJW 73S 38W RIMROCK 27C ET (DLF HYF IEF MSUDF MDF)
 GLENLEES 27C KREED 3H (DLF HYF IEF MSUDF)
 HAROLDSONS CARLA 4T 55Y (DLF HYF IEF)

NJW 76S P20 BEEF 38W ET (DLF HYF IEF MSUDF MDF)
 NJW P606 72N DAYDREAM 73S (DLF HYF IEF MSUDF MDF)
 HAROLDSONS WLL ANCHOR 4T
 HAROLDSONS CARLA 11P 37U

REMITALL TIMEKEEPER 129T
 GLENLEES KDY 129T ALISON 31X
 GLENLEES 340R ALISON 38T

REMITALL PATRIOT ET 13P (DLF HYF IEF)
 REMITALL DIXIE 395L
 REMITALL ROUGHNECK ET 340R
 MCCOY 58G ALISON 83L

BW	EPDs	CE	BW	WW	YW	Milk	TM
95 lbs.		-3.1	4.3	50.3	86.0	26.0	51.2

Really like how Alison 27K ties things together. Starting up front with a real feminine head. Her neck ties into her shoulder in a nice high placement. Bold sprung in her rib cage and strong topped. Nice and level in her hip with some shape to her quarter. Take note of her dams age.



36

PC03083522

BRKS 2J

February 4, 2021

BROOKS 9F 25G **GEMINI** 2J
Polled Female

MOHICAN THM EXCEDE Z426 {DLF HYF IEF MSUDF MDF}
MCCOY Z426 LEGACY 9F {DLF HYF IEF MSUDF}
MCCOY Z311 CONNIE 56D {DLF HYF IEF MSUDF}

TH133U 719T UPGRADE 69X {DLF HYF IEF}
NJW M326 UNFORGETTABLE 76W ET {DLF HYF IEF}
KCF BENNETT ENCORE Z311 ET {DLF HYF IEF MSUDF}
MCCOY 5Z CONNIE 92B

WLB HOME RUN 8Y 112C {DLF HYF IEF MDC}
DTHF GEMINI 25G {DLF HYF IEF MSUDF MDF}
DTHF DELILAH 135D

NJW 73S W18 HOMEGROWN 8Y ET {DLF HYF IEF MSUDF MDC}
WLB 10H MARY 28T
HAROLDSONS DENSITY T100 34A {DLF HYF IEF}
DTHF ALEXANDRIA 90A

BW	EPDs	CE	BW	WW	YW	Milk	TM
79 lbs.		3.3	2.5	60.5	107.3	28.5	58.8

Came to us in dam from DTHF. Gemini 2J is massive throughout her body with a big sweeping rib cage. The heifer with the most length of spine of our offering. Comes with very acceptable data.
Bred A.I. on May 7, 2022 to Brooks 1F 12B Action 31J. Exposed to Glenlees 27C Kreed 3H from June 1 to July 31, 2022. Ultrasound Safe to exposure 75 days on Aug 16.

BROOKS FARMS | BRED HEIFERS



37
PC03082929

BRKS 11J

February 20, 2021

REMITALL-W START ME UP ET 7B (DLF HYF IEF MSUDF MDF)
TH 745A 7B START ME UP 71D (DLF HYF IEF MSUDF)
RANGELINE 11Y MISS WORLD 745A (DLF HYF IEF)

CB 57U CAN DOO 102Y (DLF HYF IEF MSUDF)
REMITALL-WEST MARVEL ET 76Y (DLF HYF IEF MDF)
BOYD WORLDWIDE 9050 ET (DLF HYF IEF MSUDF MDF)
RANGELINE 60S TEAR DROP 11Y

SQUARE-D KING EDWARD 361X (DLF HYF IEF)
SQUARE-D RAYNA 995B
SQUARE-D JAEDON 659P

BW	EPDs	CE	BW	WW	YW	Milk	TM
98 lbs.		-4.9	5.3	62.7	97.1	21.3	52.7

We don't plan on letting anymore Start Me Up 71D daughter go. They're just the easy keeping kind and they pass that fleshing ability on to their offspring. Long and deep bodied. Full sister retained in herd.
Bred A.I. on May 14, 2022 to Brooks 1F 12B Action 31J. Exposed to Glenlees 27C Kreed 3H from June 5 to July 31, 2022. Ultrasound Safe to exposure 65 days on Aug 16.

BROOKS 71D 995B **RAYNA** 11J
Polled Female

WILGOR 55K NORTHEASTERN OL 2N (DLF HYF IEF)
SQUARE-D GINA 361R
SADDLE-VALLEY 203E HAMM 822H
SQUARE-D VICTORIA 594J



38
PC03097247

BRKS 19J

March 1, 2021

EFBEEF TFL U208 TESTED X651 ET (DLF HYF IEF MSUDF)
INNISFAIL WHR X651/723 4013 ET (DLF HYF IEF MSUDF MDF)
INNISFAIL P230 T723 (DLF HYF IEF MSUDF)

EFBEEF FOREMOST U208 (DLF HYF IEF MSUDF)
EFBEEF P606 MABEL R415
EF F745 FRANK P230 (DLF HYF IEF MSUDF)
INNISFAIL 235 R501 ET (DLF HYF IEF)

TH 122 71I VICTOR 521X ET (DLF HYF IEF)
BROOKS 521X 11B DIANNE 15D
BROOKS 425X DIANNE 11B

BW	EPDs	CE	BW	WW	YW	Milk	TM
99 lbs.		-6.4	5.6	71.9	114.2	33.0	69.0

Sired by the popular Innisfail 4013 bull. This one is real attractive when she gets in motion. Her dam has a really nice udder. This is a mating that we went back to this past spring.
Bred A.I. on May 10, 2022 to Brooks 1F 12B Action 31J. Exposed to Glenlees 27C Kreed 3H from June 5 to July 31, 2022. Ultrasound safe to A.I. service.

BROOKS 4013 15D **DIANNE** 19J
Polled Female

DRF JWR PRINCE VICTOR 71I (DLF HYF IEF MSUDF)
KBCR 19D DOMINETTE 122 (DLF IEF)
TH 89T 743 UNTAPPED 425X ET (DLF HYF IEF)
ANL 3N DIANNE 129W

The Sally cow family is our largest and for a good reason. Udder quality, suspension, teat placement and size is built into this family. Sally 20J will hit her stride in production. Dam is a maternal sister to Action 31J, our high selling bull this past spring, going to Haroldsons Polled Herefords.

Bred A.I. on May 8, 2022 to Glenlees 27C Kreed 3H. Exposed to Glenlees 27C Kreed 3H from June 5 to July 31, 2022. Ultrasound Safe to A.I. Service.



39 **PC03082933** **BRKS 20J** **March 2, 2021** **BROOKS 36G 20E SALLY 20J** **Polled Female**

HAROLDSON'S UPGRADE T100 33D (DLF HYF IEF MSUDF) SHF TAHOE R117 T100 (DLF HYF IEF MSUDF) ANL C HAR T100 TAHOE 86 ET 23B (DLF HYF IEF MSUDF MDF) SHF TAHOE R117 T100 (DLF HYF IEF MSUDF) BROOKS 36G 20E SALLY 20J
 HAROLDSON'S UNITED 33D 36G (DLF HYF IEF MSUDF MDF) MOHICAN MISSEY 93W (DLF HYF IEF) ANL 7N MAPLE 86R (DLF HYF IEF) TH 89T 743 UNTAPPED 425X ET (DLF HYF IEF) HAROLDSON'S WLC MIRA ET 52B (DLF HYF IEF MSUDF MDC) NJW 73S W18 HOMETOWN 10Y ET (DLF HYF IEF MSUDF MDC) BROOKS 23B 12B SALLY 20E BROOKS 425X SALLY 12B BROOKS 83U SALLY 8X
 HAROLDSON'S 37H MIRA ET 62K

BW	EPDs	CE	BW	WW	YW	Milk	TM
84 lbs.		-1.0	5.7	67.8	111.0	25.8	59.7

The youngest yearling of our offering. Sound structured, moderate in frame with an attractive look.
Bred A.I. on May 18, 2022 to Glenlees 27C Kreed 3H. Exposed to Glenlees 27C Kreed 3H from June 5 to July 31, 2022. Ultrasound Safe to A.I. Service.



40 **PC03082955** **BRKS 56J** **April 8, 2021** **BROOKS 1F 192E EVERLY 56J** **Polled Female**

MHPH 521X ACTION 106A (DLF HYF IEF MSUDF) TH 122 71I VICTOR 521X ET (DLF HYF IEF) WLB HOME RUN 8Y 112C (DLF HYF IEF MDC) SHF TAHOE R117 T100 (DLF HYF IEF MSUDF) BROOKS 106A 30B ACTION 1F (DLF HYF IEF MSUDF MDF) MHPH 301W DAINTY 205Y (DLF HYF IEF MSUDF MDF) WLB 10H MARY 28T WLB 73S W18 HOMETOWN 10Y ET (DLF HYF IEF MSUDF MDC) DTHF EVERLY 192E (DLF HYF IEF MSUDF MDC) ANL DM 719T VICTOR 76S ET 47Z (DLF HYF IEF) GLENLEES DBK 10Y ART WORK 30B (DLF HYF IEF MDC) RVP STAR 45S SAY YES 53Y (DLF HYF IEF) DTHF BELINDA 2B DTHF LACEY 43Y

BW	EPDs	CE	BW	WW	YW	Milk	TM
78 lbs.		8.0	1.1	51.1	81.6	30.7	56.3



Kevin & Noreen Blair; Darren & Deb Blair
 Box 610, Lanigan, SK S0K 2M0
 Kevin Blair: 306-365-7922 kevin@blairs.ag

41

PERKS 0003 **EASY MONEY** 4003

x TH 403A 475Z **RITA** 352C ET

Package of Three (3) Embryos

BR CURRENCY 8144 ET
PERKS 0003 EASY MONEY 4003
 PR 144U RAMONA 0003 ET

TH 89T 755T STOCKMAN 475Z
TH 403A 475Z RITA 352C ET
 TH 71U 17Y RITA 403A

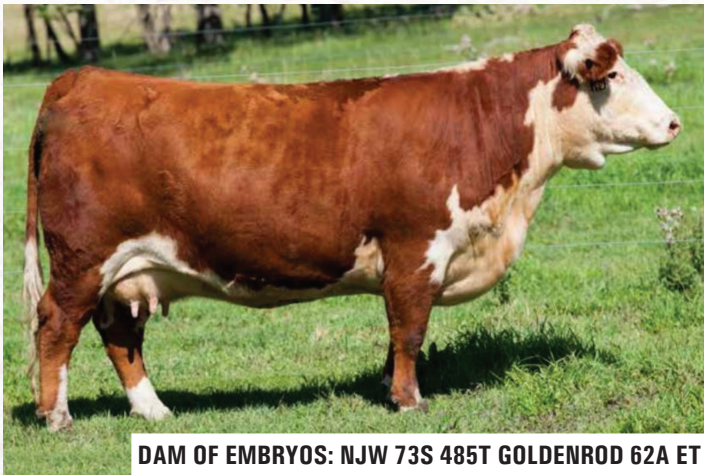
DM BR SOONER
 BR GABRIELLE 5082
 TH 75J 243R BAILOUT 144U ET (DLF HYF IEF)
 PR 279R RAMONA 7024 ET
 TH 223 71I VICTOR 755T (DLF HYF IEF)
 TH 16G 20N GEMINI 89T (DLF HYF IEF)
 TH 22R 16S LAMBEAU 17Y
 TH 7N 45P RITA 71U (DLF HYF IEF)

PE EPDs	CE	BW	WW	YW	Milk	TM
	0.6	6.3	64.6	116.1	21.5	53.5

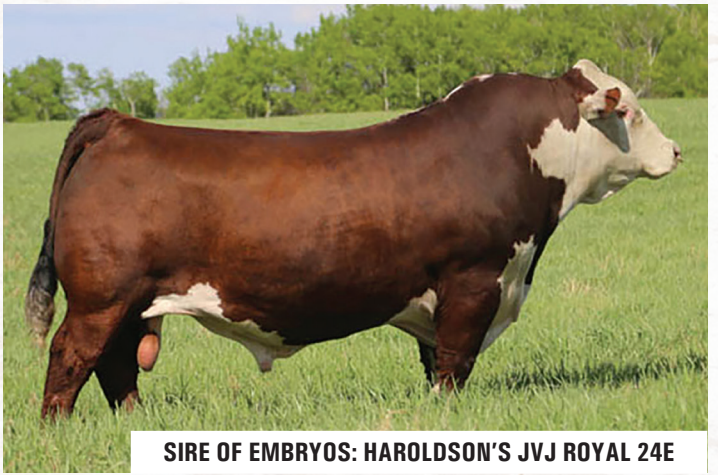
Embryos stored at Bow Valley Genetics.



SIRE OF EMBRYOS: PERKS 0003 EASY MONEY 4003



DAM OF EMBRYOS: NJW 73S 485T GOLDENROD 62A ET



SIRE OF EMBRYOS: HAROLDSON'S JVJ ROYAL 24E

42

Haroldson's JVJ **Royal** 24E x NJW 73S 485T **Goldenrod** 62A ET

Package of Three (3) Embryos

H BK CCC SR GAME CHANGER ET
HAROLDSON'S JVJ ROYAL 24E (DLF HYF IEF MSUDF)
 HAROLDSON'S AD JESSICA 48Y 13B

KJ HVH 33N REDEEM 485T ET (DLF HYF IEF)
 NJW 78P 63N LADYSPORT 51W ET
 HAROLDSONS WLC RHINO ET 48Y (DLF HYF IEF)
 HAROLDSON'S WS JESSICA 4T 60X

KJ HVH 33N REDEEM 485T ET (DLF HYF IEF)
NJW 73S 485T GOLDENROD 62A ET
 NJW P606 72N DAYDREAM 73S (DLF HYF IEF)

SHF RADAR M326 R125 (DLF HYF IEF)
 HVH OKSANA 4L 33N (DLF HYF IEF)
 PW VICTOR BOOMER P606 (MDF)
 NJW 94J DEW 72N (DLF HYF IEF)

PE EPDs	CE	BW	WW	YW	Milk	TM
	0.4	4.7	58.4	96.1	27.3	56.5

Stored at Bow Valley Genetics.

43 TH 403A 475Z **PIONEER** 358C ET {DLF HYF IEF MSUDF}
 PC03042659 358C January 9, 2015 Polled Male

TH 223 71I VICTOR 755T {DLF HYF IEF MSUDF MDF} DRF JWR PRINCE VICTOR 71I {DLF HYF IEF MSUDF}
 KBCR 19D DOMINETTE 223 {DLF IEF}
TH 89T 755T STOCKMAN 475Z {DLF HYF IEF} NPH 20X SPARTAN 20N {DLF HYC IEF}
 TH 16G 20N GEMINI 89T {DLF HYF IEF} TEE-JAY 707B GEMINI ET 16G
 TH 121L 63N TUNDRA 16S {DLF HYF IEF}
 TH 22R 16S LAMBEAU 17Y {DLF HYF IEF MSUDF MDF} TH 62N 3L KELSEY 22R {DLF HYF IEF}
TH 71U 17Y RITA 403A {DLF HYF IEF} NJW FHF 9710 TANK 45P {DLF HYF IEF MDF}
 TH 7N 45P RITA 71U {DLF HYF IEF} TH 814H 3L RITA 7N {DLF HYF IEF}

BW	EPDs	CE	BW	WW	YW	Milk	TM
		-4.5	6.4	84.2	144.8	27.9	70.0

3 straws stored at Davis-Rairden



44 WHITEHAWK **WARRIOR** 845C ET {DLF HYF IEF MSUDF MDF}
 PC03045176 845C February 5, 2015 Polled Male

HUTH PROSPECTOR K085 {DLF HYF IEF} RRH MR FELT 3008 {DLF HYF IEF}
 HUTH 34A PAULA 68F
UPH PROSPECTOR P152 {DLF HYF IEF} LHR PERFORMER BG1 22E
 UPH MANDY M863 U RACIE B353
 GVHHH J30 143A H132 {DLF HYF IEF}
 GRANDVIEW VIC H132 23G 4003 ET {DLF HYF IEF} REMITALL GINGER 23G {DLF HYF IEF}
ANL 17A COREY'S 49W 162D REMITALL BOOMER 46B {DLF HYF IEF}
 DJB 46B BETH 1L {DLF HYF IEF MSUDF} PW VICTORIA 964 8114 {DLF HYF IEF}

BW	EPDs	CE	BW	WW	YW	Milk	TM
		0.4	2.7	73.2	113.8	44.3	80.9

7 straws stored at Davis-Rairden



45 NJW 73S W18 **DOWNHOME** 21ZET {DLF HYF IEF MDF} **Polled Male**
 PC02983932 73S 21Z February 5, 2012

KCF BENNETT 3008 M326 {DLF HYF IEF MDF} RRH MR FELT 3008 {DLF HYF IEF}
 KCF MISS 459 F284
SHF WONDER M326 W18 ET {DLF HYF IEF MDC} MM RSM STOCKMASTER 512 {DLF HYF IEF MDF}
 SHF GOVERNESS 236G L37 {DLF HYF IEF MDF} SHF INTERSTATE D03 G80
 REMITALL BOOMER 46B {DLF HYF IEF}
 PW VICTOR BOOMER P606 {DLF HYF IEF MDF} PW VICTORIA 964 8114 {DLF HYF IEF}
NJW P606 72N DAYDREAM 73S {DLF HYF IEF MSUDF MDF} RU 20X BOULDER 57G {DLF HYF IEF}
 NJW 94J DEW 72N {DLF HYF IEF} NJW D32 CLAIRE 94J

BW	EPDs	CE	BW	WW	YW	Milk	TM
		5.8	2.9	57.2	106.2	32.9	61.5

4 straws stored at Davis-Rairden



46 HAROLDSONS WLC **RHINO** ET 48Y {DLF HYF IEF} **Male**
 PC02960238 AFSY 48Y March 26, 2011

SHF RIB EYE M326 R117 {DLF HYF IEF} KCF BENNETT 3008 M326 {DLF HYF IEF MDF}
 HVM MISS HUDSON 83K 8M
SHF TAHOE R117 T100 {DLF HYF IEF MSUDF} MM RSM STOCKMASTER 512 {DLF HYF IEF MDF}
 SHF LADY 512 L73 SHF INTERSTATE D03 G28
 MM RSM STOCKMASTER 512 {DLF HYF IEF MDF}
 REMITALL HOLLYWOOD 37 REMITALL SHARON ESTA 84E
HAROLDSON'S 37H MIRA ET 62K HAROLDSON'S RAIDER P183 ET 2Z {HYF}
 HAROLDSON'S CU DESTINY 2Z 19G SQUARE-D SUSIE 537C

BW	EPDs	CE	BW	WW	YW	Milk	TM
94 lbs.		3.0	3.1	62.6	111.0	34.0	65.3

2 straws stored at Davis-Rairden





Golden Oak Livestock
 Bowden, AB
 Tom McNeely: 780-679-7220
 Email: tom@goldenoaklivestock.com



47 **PC03091530** **GO 222K** **January 17, 2022** **GOLDEN-OAK 24E TEMPTRESS 222K** **Polled Female**

H BK CCC SR GAME CHANGER ET {DLF HYF IEF MSUDF}
 HAROLDSON'S NJ ROYAL 24E {DLF HYF IEF MSUDF}
 HAROLDSON'S AD JESSICA 48Y 13B {DLF HYF IEF MSUDF}

KJ HVH 33N REDEEM 485T ET {DLF HYF IEF}
 NJW 78P 63N LADYSPORT 51W ET {DLF HYF IEF}
 HAROLDSONS WLC RHINO ET 48Y {DLF HYF IEF}
 HAROLDSON'S WS JESSICA 4T 60X

GOLDEN-OAK 4J MAXIUM 28M {DLF HYF IEF}
 BLAIR'S 28M 5C TEMPTRESS 3F
 BLAIR'S 45P33W TEMPTRESS ET 5C

EAGLE-RIDGE BLASTER ET 4J
 TA-BAR CHANTELE 15K
 NJW FHF 9710 TANK 45P {DLF HYF IEF MDF}
 HAROLDSON'S TEMPTRESS T100 33W {DLF HYF IEF}

BW	EPDs	CE	BW	WW	YW	Milk	TM
93 lbs.		-5.3	6.1	56.7	96.0	23.8	52.2

222K is a full sister to GO 103J who was a class winner at Agribition in 2021 and sold to Medonte Highlands for \$18,000 in the CWA sale. 222K stems from the great Temptress cow family and the breeding giant, Haroldson's Royal, who are both past CWA champions. She has greatness in her DNA!

Owned with Eric Smith

GLENLEES FARM | HEIFER CALF



George & Annette Lees
 Box 358, Arcola, SK S0C 0G0
 Phone: 306-455-2612

Corey, Tasha, Emma, Kyla & Becca Lees
 Box 1, Arcola, SK S0C 0G0
 Phone: 306-455-2714 Cell: 306-577-9971
 tclees@signaldirect.ca www.glenlees.com



48

PC03095955

SHF CANNON Z210 C95 (DLF HYF IEF MSUDF)
 GHC C5 ATTENTION 155E (DLF HYF IEF MSUDF MDF)
 GHC C5 MISS DUCHESS 58C (DLF HYF IEF MSUDF)

AHL 29K

GV CMR X151 MR 847 Z210 (DLF HYF IEF MDF)
 SHF MISTY 33T Y35 (DLF HYF IEF)
 NJW 100W FOUNDATION 54Z ET (DLF HYF IEF)
 GHC MISS UNIQUE 25Z (DLF HYF IEF MSUDF)

February 15, 2022

GLENLEES 719T OPTION ET 26A (DLF HYF IEF)
 GLENLEES 26A SHERRY 32C
 GLENLEES 57Y SHERRY 70A

GLENLEES 155E **SHERRY** 29K
 Polled Female

TH 122 71I VICTOR 719T (DLF HYF IEF MSUDF MDF)
 RVP STAR 122L ART WORK ET 35W (DLF HYF IEF)
 HAROLDSONS WLC JACK ET 57Y (DLF HYF IEF)
 GLENLEES 66S SHERRY 8W

BW	EPDs	CE	BW	WW	YW	Milk	TM
89 lbs.		1.9	2.8	57.4	89.8	25.1	53.8

We used the Attention bull real hard here and boy are we glad we did! They are the right kind of cattle for the times.
 This female is backed by our Sherry cow family and will make a tremendous brood cow.

GLENLEES FARMS | HEIFER CALVES

Very angular and feminine in a fault free package. 4013 and Rimrock up close genetically...could be interesting in production! A female that is destined to make a really good cow.



49
PC03095956

INNISFAIL WHR X651/723 4013 ET {DLF HYF IEF MSUDF MDF}
 MOHICAN 4013 UPLOAD 39G {DLF HYF IEF MSUDF}
 MOHICAN LUCKY LADY Z60 {DLF HYF IEF}

AHL 18K

EFBEEF TFL U208 TESTED X651 ET {DLF HYF IEF MSUDF}
 INNISFAIL P230 T723 {DLF HYF IEF MSUDF}
 MOHICAN XTREME 2X {DLF HYF IEF}
 MOHICAN LUCKY LADY 224W {DLF HYF IEF}

February 10, 2022

NJW 73S 38W RIMROCK 27C ET {DLF HYF IEF MSUDF MDF}
 GLENLEES BNC 27C ETTA 18G
 BNC 102Y ETTA 6A

GLENLEES BNC 39G **ETTA** 18K
 Polled Female

NJW 76S P20 BEEF 38W ET {DLF HYF IEF MSUDF MDF}
 NJW P606 72N DAYDREAM 73S {DLF HYF IEF MSUDF MDF}
 CB 57U CAN DOO 102Y {DLF HYF IEF MSUDF}
 BNC 10H ETTA ET 222R

BW	EPDs	CE	BW	WW	YW	Milk	TM
82 lbs.		2.5	2.9	57.5	88.4	29.8	58.6

These Upload's are a new sire group for us off of our herd sire purchased from Mohican West. This girl is upheaded, big bodied and cosmetically right.



MOHICAN 4013 UPLOAD 39G
 SIRE OF LOT 49 & 50

50
PC03096903

INNISFAIL WHR X651/723 4013 ET {DLF HYF IEF MSUDF MDF}
 MOHICAN 4013 UPLOAD 39G {DLF HYF IEF MSUDF}
 MOHICAN LUCKY LADY Z60 {DLF HYF IEF}

AHL 43K

EFBEEF TFL U208 TESTED X651 ET {DLF HYF IEF MSUDF}
 INNISFAIL P230 T723 {DLF HYF IEF MSUDF}
 MOHICAN XTREME 2X {DLF HYF IEF}
 MOHICAN LUCKY LADY 224W {DLF HYF IEF}

February 19, 2022

TH 512X 17Y LAMBEAU 404D ET {DLF HYF IEF MSUDF}
 GLENLEES DBK 404 TEMPTRESS 2F
 MOHICAN TEMPTRESS 400D ETD {DLF HYF IEF MSUDF}

GLENLEES 39G **TEMPTRESS** 43K
 Polled Female

TH 22R 16S LAMBEAU 17Y {DLF HYF IEF MSUDF MDF}
 TH 122 71I DOMINETTE 512X ET {DLF HYF IEF}
 NJW 78P TWENTYTWELVE 190Z ET {DLF HYF IEF}
 ANL R 45P 25S TEMPTRESS ET 53Y {DLF HYF IEF}

BW	EPDs	CE	BW	WW	YW	Milk	TM
84 lbs.		0.5	3.0	60.2	98.2	26.9	57.1

GLENLEES FARMS | HEIFER CALVES



51

PC03095954

AHL 132K

March 27, 2022

H DEBERARD 7454 ET (DLF HYF IEF MSUDF MDF)
 GLENLEES 7454 GAME ON 69H (DLF HYF IEF MSUDF)
 GLENLEES 9050 GOLDIE 103C

UPS SENSATION 2296 ET (DLF HYF IEF MSUDF MDF)
 RST GAT NST Y79D LADY 54B ET (DLF HYF IEF MSUDF)
 BOYD WORLDWIDE 9050 ET (DLF HYF IEF MSUDF MDF)
 SINNIBARS MS 1121Y GOLDIE 520A (DLF HYF IEF)
 TH 33Y 3X SHEYENNE 740A (DLF HYF IEF)
 GLENLEES DBK 740 GLORIA 103D
 GLENLEES J 452Y GLORIA 44B

GLENLEES DBK 69H **GLORIA** 132K
 Polled Female

TH 49U 719T SHEYENNE 3X (DLF HYF IEF)
 RANGELINE 23S ISABELL 33Y
 TH 43P 719T VICTOR 452Y ET (DLF HYF IEF)
 GLENLEES AXA 7101 GLORIA 10Z

BW	EPDs	CE	BW	WW	YW	Milk	TM
89 lbs.		1.2	4.0	64.0	101.2	25.0	57.0



52

PC03096902

AHL 45K

February 20, 2022

H DEBERARD 7454 ET (DLF HYF IEF MSUDF MDF)
 GLENLEES 7454 GAME ON 69H (DLF HYF IEF MSUDF)
 GLENLEES 9050 GOLDIE 103C

UPS SENSATION 2296 ET (DLF HYF IEF MSUDF MDF)
 RST GAT NST Y79D LADY 54B ET (DLF HYF IEF MSUDF)
 BOYD WORLDWIDE 9050 ET (DLF HYF IEF MSUDF MDF)
 SINNIBARS MS 1121Y GOLDIE 520A (DLF HYF IEF)
 BAR-J-M DIERK 1D (DLF HYF IEF MSUDF)
 DORBAY MISS SARAH 30G
 AXA 106A MISS SARAH 511C (DLF HYF IEF MSUDF)

GLENLEES BNC 69H **SARAH** 45K
 Polled Female

NJW 73S W18 DOWNHOME 21ZET (DLF HYF IEF MDF)
 BAR-J-M BAILEY 16A
 MHPH 521X ACTION 106A (DLF HYF IEF MSUDF)
 DORBAY MISS SARAH 410A (DLF HYF IEF MSUDF)

BW	EPDs	CE	BW	WW	YW	Milk	TM
68 lbs.		5.6	1.8	59.7	93.7	31.3	61.2

These 2 heifer calves will be the first to sell off of the regiening Agribition Champion Bull and top 10 Finalist in the Supreme, Game On. Both are made right, possessing extra length, bold hip shape and sound in there structure. With the body type and design of these females they should be really competitive at any level.



53

PC03087877

AHL 45J

February 12, 2021

GLENLEES MHPH 4040 **ARTWORK** 45J
Polled Female

TH 22R 16S LAMBEAU 17Y {DLF HYF IEF MSUDF MDF}
BOYD FT KNOX 17Y XZ5 4040 {DLF HYF IEF MSUDF MDF}
DOSS MY EYES ADORE U DHZ5 {DLF HYF IEF}

TH 121L 63N TUNDRA 16S {DLF HYF IEF}
TH 62N 3L KELSEY 22R {DLF HYF IEF}
BOYD WORLDWIDE 9050 ET {DLF HYF IEF MSUDF MDF}
DHF COVER GIRL C902

MHPH 521X ACTION 106A {DLF HYF IEF MSUDF}
GLENLEES 106A ART WORK 13C
RVP STAR 45S SAY YES 53Y {DLF HYF IEF}

TH 12271I VICTOR 521X ET {DLF HYF IEF}
MHPH 301W DAINTY 205Y {DLF HYF IEF MSUDF MDF}
STAR 2013 BATTLE CRY 45S {DLF HYF IEF}
RVP STAR 122L ART WORK ET 35W {DLF HYF IEF}

BW	EPDs	CE	BW	WW	YW	Milk	TM
89 lbs.		3.0	2.8	58.9	91.7	22.8	52.3

The Senior Champion Yearling and Reserve Overall Champion Female from Bonanza 2022 in Lindsay, Ontario. An own daughter of the Fort Knox bull who's daughters are near perfect design in udder structure. A tremendous opportunity to add a powerful female to your operation. The Art Work cow family has constantly produced some of our best.

Bred May 7 to Glenlees 6C Element 118G. Pasture exposed to Element from May 7 to June 30. Ultra sounded safe to May 7 breeding.



AHL 45J Bonanza picture



BOYD FT KNOX 17Y XZ5 4040
Sire to lot 53.

GLENLEES FARMS | BRED HEIFERS



54

PC03084435

AHL 56J

February 15, 2021

EFBEEF TFL U208 TESTED X651 ET (DLF HYF IEF MSUDF)
 INNISFAIL WHR X651/723 4013 ET (DLF HYF IEF MSUDF MDF)
 INNISFAIL P230 T723 (DLF HYF IEF MSUDF)

EFBEEF FOREMOST U208 (DLF HYF IEF MSUDF)
 EFBEEF P606 MABEL R415
 EF F745 FRANK P230 (DLF HYF IEF MSUDF)
 INNISFAIL 235 R501 ET (DLF HYF IEF)

FTF PROSPECTOR 145Y (DLF HYF IEF MSUDF MDF)
 BNC GLENLEES 145 TAYLOR 30D
 BNC 804 WILDA 1142B

BW	EPDs	CE	BW	WW	YW	Milk	TM
92 lbs.		-1.4	4.9	73.5	119.7	30.0	66.8



55

PC03087943

AHL 67J

February 18, 2021

NJW FHF 9710 TANK 45P (DLF HYF IEF MDF)
 BLAIR'S 45P 33W SOUTHPAW ET 6C (DLF HYF IEF MSUDF)
 HAROLDSON'S TEMPRESS T100 33W (DLF HYF IEF)

FHF 8403 STARBUCK 19H
 GV 579 VICTORIA 9710 (DLF HYF IEF)
 SHF TAHOE R117 T100 (DLF HYF IEF MSUDF)
 HAROLDSON'S TEMPRESS 13P 25S (DLF HYF IEF)

BIRD'S-HILL VEGAS 3U (DLF HYF IEF)
 BNC 3U PATRICIA 317Z
 GF 29F MORNING GIRL ET 110R

BW	EPDs	CE	BW	WW	YW	Milk	TM
90 lbs.		-5.7	5.4	54.9	90.9	24.4	51.9

36

A direct daughter of 4013 and they are making exceptional cows. Always been one of our favourite females of the group. Lots of power and performance in an elegant package. The mother of this heifer is one of our best.

Bred May 19 to RST C002 Torque 1042.
Ultra sounded safe to this date.
Pasture exposed to Torque from May 22 to Aug. 2.

GLENLEES DBK 4013 **TAYLOR** 56J
 Polled Female

HUTH PROSPECTOR K085 (DLF HYF IEF)
 FTF CHICK A BOOM 7227T (DLF HYF IEF)
 NJB 75R CASH ADVANCE 804 ET (DLF HYF IEF)
 SQUARE-D 362T TAYLOR 1142Y (DLF HYF IEF)

A female that has a little extra power and punch to her. She is developing a super looking udder. A full sister sold in River Valley's production Sale this year.
Al'ed to Boyd Ft Knox 17Y XZ5 4040 on May 18.
Ultra sounded safe to this breeding.
Pasture exposed to RST C002 Torque 1042 from June 8 to Aug. 2.



BOYD FT KNOX 17Y XZ5 4040
 Service sire.

GLENLEES BNC 6C **PATRICIA** 67J
 Polled Female

REMITALL SUPER DUTY 42S (DLF HYF IEF)
 GF 4L MELISSA 222P
 CS BOOMER 29F (DLF HYF IEF)
 BARRONS 2Z BLOSSOM ET 1L

Genetically right for the times being a Whitman out of the Remitall Marvel cow family. Her Rimrock mother is a powerful Rimrock daughter.

Bred May 16 to Glenlees 6C Element 118G.
Ultra sounded safe to this breeding.
Exposed to Element from May 7 to Aug. 8.



56

PC03088225

LJR Q23R WHITMORE 10W {DLF HYF IEF MSUDF MDF}
 NJW 165A 10W WHITMAN 34G ET {DLF HYF IEF MSUDF MDF}
 NJW 137X 10Y FAITH 165A {DLF HYF IEF MSUDF MDF}

AHL 79J

February 21, 2021

KJ C&L J119 LOGIC Q23R ET {DLF HYF IEF}
 LJR MICKEY 278N {DLF IEF}
 NJW 73S W18 HOMETOWN 10Y ET {DLF HYF IEF MSUDF MDC}
 NJW 67U 3027 VACA 137X {DLF HYF IEF MSUDF}

NJW 73S 38W RIMROCK 27C ET {DLF HYF IEF MSUDF MDF}
 GLENLEES BNC 27C MARVEL 108F
 REMITALL-W BNC MARVEL 163C

GLENLEES BNC 34G **MARVEL** 79J
 Polled Female

NJW 76S P20 BEEF 38W ET {DLF HYF IEF MSUDF MDF}
 NJW P606 72N DAYDREAM 73S {DLF HYF IEF MSUDF MDF}
 TH 512X 719T PLAYMAKER 14Z {DLF HYF IEF MDF}
 REMITALL-WEST MARVEL ET 76Y {DLF HYF IEF MDF}

BW	EPDs	CE	BW	WW	YW	Milk	TM
70 lbs.		8.9	-0.7	47.4	71.1	22.8	46.5

A heifer with extra body mass a very maternal look to her. This will be the first year for Whitman daughters to come into production.

Bred May 13 to Glenlees 6C Element 118G.
Ultra sounded safe to this breeding.
Exposed to Element from May & to Aug. 8.



57

PC03087880

LJR Q23R WHITMORE 10W {DLF HYF IEF MSUDF MDF}
 NJW 165A 10W WHITMAN 34G ET {DLF HYF IEF MSUDF MDF}
 NJW 137X 10Y FAITH 165A {DLF HYF IEF MSUDF MDF}

AHL 53J

February 14, 2021

KJ C&L J119 LOGIC Q23R ET {DLF HYF IEF}
 LJR MICKEY 278N {DLF IEF}
 NJW 73S W18 HOMETOWN 10Y ET {DLF HYF IEF MSUDF MDC}
 NJW 67U 3027 VACA 137X {DLF HYF IEF MSUDF}

BNC W18 WONDER 102B {DLF HYF IEF}
 GLENLEES 102B SHAKIN IT UP 90F
 STAR MKS SHAKIN IT UP 112Y {DLF HYF IEF}

GLENLEES 34G **SHAKIN IT UP** 53J
 Polled Female

SHF WONDER M326 W18 ET {DLF HYF IEF MDC}
 CGVH 13P CAPITOL HILL 90U {DLF HYF IEF}
 HB STAR BATTLE GROUND 2013 {DLF HYF IEF}
 STAR MKS STIR N IT UP 58W {DLF HYF IEF}

BW	EPDs	CE	BW	WW	YW	Milk	TM
85 lbs.		0.7	2.3	53.4	84.6	21.0	47.7

GLENLEES FARMS | BRED HEIFERS



58

PC03095839

AHL 54J

February 14, 2021

BLAIR'S 45P 33W SOUTHPAW ET 6C (DLF HYF IEF MSUDF)
 GLENLEES 6C ELEMENT 118G (DLF HYF IEF MSUDF)
 RVP 106A CAMEO GIRL 45C (DLF HYF IEF)

NW FHF 9710 TANK 45P (DLF HYF IEF MDF)
 HAROLDSON'S TEMPTRESS T100 33W (DLF HYF IEF)
 MHPH 521X ACTION 106A (DLF HYF IEF MSUDF)
 PCL QUEEN MAKER 118U 61Z (DLF HYF IEF)

PCL YUKON R117 ET 49Y (DLF HYF IEF MSUDF MDF)
 PCL 49Y NUANCE 126F
 PCL NUANCE 409X 2B (DLF HYF IEF)

GLENLEES 118 **NUANCE** 54J
 Polled Female

SHF RIB EYE M326 R117 (DLF HYF IEF)
 C&T 122L STARLET 9N (DLF HYF IEF)
 TH 223 71I CONQUER 409X ET (DLF HYF IEF MDF)
 PCL MISS NUANCE 16J 66T (DLF HYF IEF)

BW	EPDs	CE	BW	WW	YW	Milk	TM
82 lbs.		-0.8	3.1	56.9	86.8	23.6	52.1



59

PC03084442

AHL 143J

March 24, 2021

NWJ 73S 38W RIMROCK 27C ET (DLF HYF IEF MSUDF MDF)
 GLENLEES BNC 27C IMPACT 43F (DLF HYF IEF MSUDF)
 BNC 11Y NELLIE 308A

NWJ 76S P20 BEEF 38W ET (DLF HYF IEF MSUDF MDF)
 NJW P606 72N DAYDREAM 73S (DLF HYF IEF MSUDF MDF)
 BNC 118U JUDGE 111Y (DLF HYF IEF)
 BNC R117 NELLIE ET 401Y (DLF HYF IEF)

GLENLEES 719T OPTION ET 26A (DLF HYF IEF)
 GLENLEES 26A POLLY 35C
 GLENLEES HH 110X POLLY 17A

GLENLEES 43F **POLLY** 143J
 Polled Female

TH 122 71I VICTOR 719T (DLF HYF IEF MSUDF MDF)
 RVP STAR 122L ART WORK ET 35W (DLF HYF IEF)
 TH 200J 63N TUNDRA 110X (DLF HYF IEF)
 BAR-RZ 32J POLLY 70P

BW	EPDs	CE	BW	WW	YW	Milk	TM
80 lbs.		5.2	2.1	53.2	82.0	29.9	56.5

Seems repetitive but another complete made Rimrock daughter. This is a female that will drop down an immaculate udder and when in production will increase in value. A maternal sister sold to Standard Hill Livestock in last years sale.

Bred May 20 to Glenlees 6C Element 118G.
Ultra sounded safe to this breeding.
Exposed to Element from May 7 to Aug. 8.



60
 PC03087873

NJW 76S P20 BEEF 38W ET {DLF HYF IEF MSUDF MDF}
 NJW 73S 38W RIMROCK 27C ET {DLF HYF IEF MSUDF MDF}
 NJW P606 72N DAYDREAM 73S {DLF HYF IEF MSUDF MDF}

AHL 38J

February 11, 2021

GLENLEES J 27C **WILMA** 38J
 Polled Female

SHF PROGRESS P20 {DLF HYF IEF}
 NJW 55N STARDUST 76S {DLF HYF IEF MSUDF MDF}
 PW VICTOR BOOMER P606 {DLF HYF IEF MDF}
 NJW 94J DEW 72N {DLF HYF IEF}

BNC W18 WONDER 102B {DLF HYF IEF}
GLENLEES 102 WILMA 47F
 GLENLEES DBK 94Z WILMA 37C

SHF WONDER M326 W18 ET {DLF HYF IEF MDC}
 CGVH 13P CAPITOL HILL 90U {DLF HYF IEF}
 NJW 100W FOUNDATION 54Z ET {DLF HYF IEF}
 GHC MISS WILMA 173X

BW	EPDs	CE	BW	WW	YW	Milk	TM
88 lbs.		-0.4	3.7	57.7	87.3	31.4	60.3

A typical Rimrock daughter. Moderate in her frame, deep bodied and complete in her make up. Rimrock's are tremendous producing females.

Bred May 26 to Glenlees 6C Element 118G.
Ultra sounded safe to this breeding.
Pasture exposed to Element from May 7 to Aug. 8.



61
 PC03087878

NJW 76S P20 BEEF 38W ET {DLF HYF IEF MSUDF MDF}
 NJW 73S 38W RIMROCK 27C ET {DLF HYF IEF MSUDF MDF}
 NJW P606 72N DAYDREAM 73S {DLF HYF IEF MSUDF MDF}

AHL 46J

February 12, 2021

GLENLEES 27C **HENRIETTA** 46J
 Polled Female

SHF PROGRESS P20 {DLF HYF IEF}
 NJW 55N STARDUST 76S {DLF HYF IEF MSUDF MDF}
 PW VICTOR BOOMER P606 {DLF HYF IEF MDF}
 NJW 94J DEW 72N {DLF HYF IEF}

RSK MHPH 10Y CAN-AM ET 75C {DLF HYF IEF MSUDF MDC}
RSK 75C MISS HENRIETTA 40F {DLF HYF IEF MSUDF}
 MHPH 11X HENRIETTA 307B {DLF HYF IEF}

NJW 73S W18 HOMETOWN 10Y ET {DLF HYF IEF MSUDF MDC}
 RSK 6U MISS SAGE 64Y {DLF HYF IEF}
 TH 71U 719T MR HEREFORD 11X {DLF HYF IEF}
 GROSVENOR HENRIETTA 144U 417Z {DLF HYF IEF}

BW	EPDs	CE	BW	WW	YW	Milk	TM
82 lbs.		5.1	1.3	45.5	75.5	30.9	53.7

GLENLEES FARMS | REF. SIRE



REF A

44301606

1042

RST C002 TORQUE 1042 (DLF HYF IEF MSUDF)

Polled Male

SHF YORK 19H Y02 (SOD CHB DLF HYF IEF)
HUTH FTF TORQUE C002 (DLF HYF IEF MSUDF MDF)
 HUTH T013 DOMINETTE Z016 (DLF HYF IEF MSUDF)
 EFBEEF TFL U208 TESTED X651 ET (CHB SOD DLF HYF IEF MSUDF)
RST MS X651 TESTED 7021 (DOD DLF HYF IEF)
 RST MS 1010 BUILT TUFF 5167 (DLF HYF IEF)

MSU MF HUDSON 19H (SOD DLF HYF IEF)
 LOEWEN MISS P20 10W (DLF HYF IEF)
 UPS DOMINO 3027 (CHB SOD DLF HYF IEF MSUDF MDF)
 HUTH R007 VERA T013 (DOD DLF HYF IEF)
 EFBEEF FOREMOST U208 (SOD CHB DLF HYF IEF MSUDF)
 EFBEEF P606 MABEL R415
 KT BUILT TUFF 1010 (SOD LF HYF IEF MSUDF MDF)
 RST MS 4167 JOHN WAYNE 1143 (HYF)

EPDs	CE	BW	WW	YW	Milk	TM
	2.5	3.2	75.0	121.0	23.0	

Service Sire lot 54, lot 58, lot 59.



REF B

GLENLEES 6C ELEMENT 118G (DLF HYF IEF MSUDF)

PC03062271

AHL 118G

March 25, 2019

Polled Male

NJW FHF 9710 TANK 45P (DLF HYF IEF MDF)
BLAIR'S 45P 33W SOUTHPAW ET 6C (DLF HYF IEF MSUDF)
 HAROLDSON'S TEMPTRESS T100 33W (DLF HYF IEF)

FHF 8403 STARBUCK 19H
 GV 579 VICTORIA 9710 (DLF HYF IEF)
 SHF TAHOE R117 T100 (DLF HYF IEF MSUDF)
 HAROLDSON'S TEMPTRESS 13P 25S (DLF HYF IEF)
 TH 122 71 VICTOR 521X ET (DLF HYF IEF)
 MHPH 521X ACTION 106A (DLF HYF IEF MSUDF)
RVP 106A CAMEO GIRL 45C (DLF HYF IEF)
 PCL QUEEN MAKER 118U 61Z (DLF HYF IEF)

MHPH 301W DAINTY 205Y (DLF HYF IEF MSUDF MDF)
 MHPH 101S UMPIRE 118U (DLF HYF IEF MSUDF MDF)
 PCL QUEEN MAKER 36N ET 9U (DLF HYF IEF)

EPDs	CE	BW	WW	YW	Milk	TM
	2.6	3.0	59.6	86.0	24.3	54.1

Sire of lot 58.

Service Sire lot 53, lot 56, lot 57, lot 60, lot 61.



REF C

GLENLEES BNC 27C IMPACT 43F (DLF HYF IEF MSUDF)

PC03048751

AHL 43F

February 17, 2018

Polled Male

NJW 76S P20 BEEF 38W ET (DLF HYF IEF MSUDF MDF)
NJW 73S 38W RIMROCK 27C ET (DLF HYF IEF MSUDF MDF)
 NJW P606 72N DAYDREAM 73S (DLF HYF IEF MSUDF MDF)

SHF PROGRESS P20 (DLF HYF IEF)
 NJW 55N STARDUST 76S (DLF HYF IEF MSUDF MDF)
 PW VICTOR BOOMER P606 (DLF HYF IEF MDF)
 NJW 94J DEW 72N (DLF HYF IEF)
 MHPH 101S UMPIRE 118U (DLF HYF IEF MSUDF MDF)
 BIRD'S-HILL GLORIA 173W (DLF HYF IEF)
 SHF RIB EYE M326 R117 (DLF HYF IEF)
 NCX MISS JR NELLIE 528N (DLF HYF IEF MSUDC)

BNC 118U JUDGE 111Y (DLF HYF IEF)
BNC 111Y NELLIE 308A
 BNC R117 NELLIE ET 401Y (DLF HYF IEF)

EPDs	CE	BW	WW	YW	Milk	TM
	1.9	4.4	60.4	93.0	35.6	65.8

Sire of lot 59



REF D

PC03075923

AHL 69H

February 28, 2020

GLENLEES 7454 **GAME ON** 69H (DLF HYF IEF MSUDF)
Polled Male

UPS SENSATION 2296 ET (DLF HYF IEF MSUDF MDF)	CHURCHILL SENSATION 028X (DLF HYF IEF MDF)	BOYD WORLDWIDE 9050 ET (DLF HYF IEF MSUDF MDF)	SHF RIB EYE M326 R117 (DLF HYF IEF)
H DEBERARD 7454 ET (DLF HYF IEF MSUDF MDF)	UPS JT MISS NEON 7811 1ET (DLF HYF IEF)	GLENLEES 9050 GOLDIE 103C	MSU TCF RACHAEL 22S ET
RST GAT NST Y79D LADY 54B ET (DLF HYF IEF MSUDF)	WORR OWEN TANKERAY Y79D ET (DLF HYF IEF MDF)	SINNIBARS MS 1121Y GOLDIE 520A (DLF HYF IEF)	MHPH 118U NEW YORKER 1121Y (DLF HYF IEF)
	H H LADY MAXIUM 111 ET (DLF HYF IEF)		MHPH MS 24K GOLDIE 307M (DLF HYF IEF)

EPDs	CE	BW	WW	YW	Milk	TM
	0.9	5.7	69.6	111.9	31.3	66.1

Sire of lot 51 and lot 52

Terms & Conditions

Terms

The terms of the sale are cash or cheque, payable at par at the sale location. The right of property shall not pass until after settlement has been made; no invoicing on buyers in attendance unless previous arrangements have been made. Every animal sells to the highest bidder and in cases of disputes, the auctioneer's decision will be final. Announcements from the auction block will take precedence over the printed matter in the catalogue. Current exchange rates will be announced sale day. All monies are in Canadian funds.

Certificate of Registration

Each animal will carry papers issued by the Canadian Hereford Association. A certificate of registry duly transferred will be furnished to the buyer for each animal after payment has been made.

Pedigree Estimates

Pedigree Estimates (PE) are created on the projected mating of the animal's sire and dam based on averages of the two, creating estimated values that do not hold the same accuracy of actual EPDs issued from the association and should be used as such.

Health

All animals in the sale have met all necessary health requirements.

Guarantee

Each animal becomes the purchaser's risk immediately after the animal is sold. All animals in this sale will be sold under the terms and guarantees set forth by the Canadian Hereford Association with regards to health, freedom from defects and from both reproductive and specific genetic unsoundness.

Pregnancy Information

All serviceable age females have been pregnancy examined by an accredited veterinarian, giving an estimated length of gestation. This estimated gestation period shall be used only as a guideline to calving and is not a guarantee of actual service.

Liabilities

All persons attend the sale at their own risk. The seller, facility owner and sale manager assume no liability, legal or otherwise, for any accidents that occur. It is understood that T Bar C Cattle Co. (2013) Ltd. is acting only as a medium between buyer and seller and is not responsible for any failure on the part of either party to live up to his obligations. Neither does T Bar C Cattle Co. (2013) Ltd. assume any financial obligations to collect or enforce collection of any monies between parties and any legal action that may, in exceptional cases, be taken must be between the buyer and the seller. T Bar C Cattle Co. (2013) Ltd. assumes no responsibility for any credit extended by the seller to the buyer. The buyer must look to the seller for fulfillment of all guarantees and representations made hereunder.

Delivery

Assistance will be given in getting your purchases home. Each animal becomes the risk of the purchaser as soon as sold.

Phone, Mail, Wire Bids

Bidders unable to attend the sale may phone, wire or mail their bids and instructions to the sale manager, auctioneer or special representatives. Bids must be received in sufficient time prior to the sale.

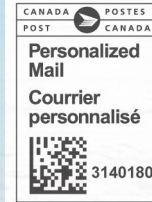
Insurance

We strongly recommend that insurance is purchased for full value.

Errors

All announcements at sale time, written or oral, supersede any written material in the catalogue.

Return Undeliverable Canadian Addresses To:
T Bar C Cattle Co. Ltd.
Box 2330, Warman, Saskatchewan S0K 4S0



RETURN POSTAGE GUARANTEED
PORT DE RETOUR GARANTI



CREATED BY

